

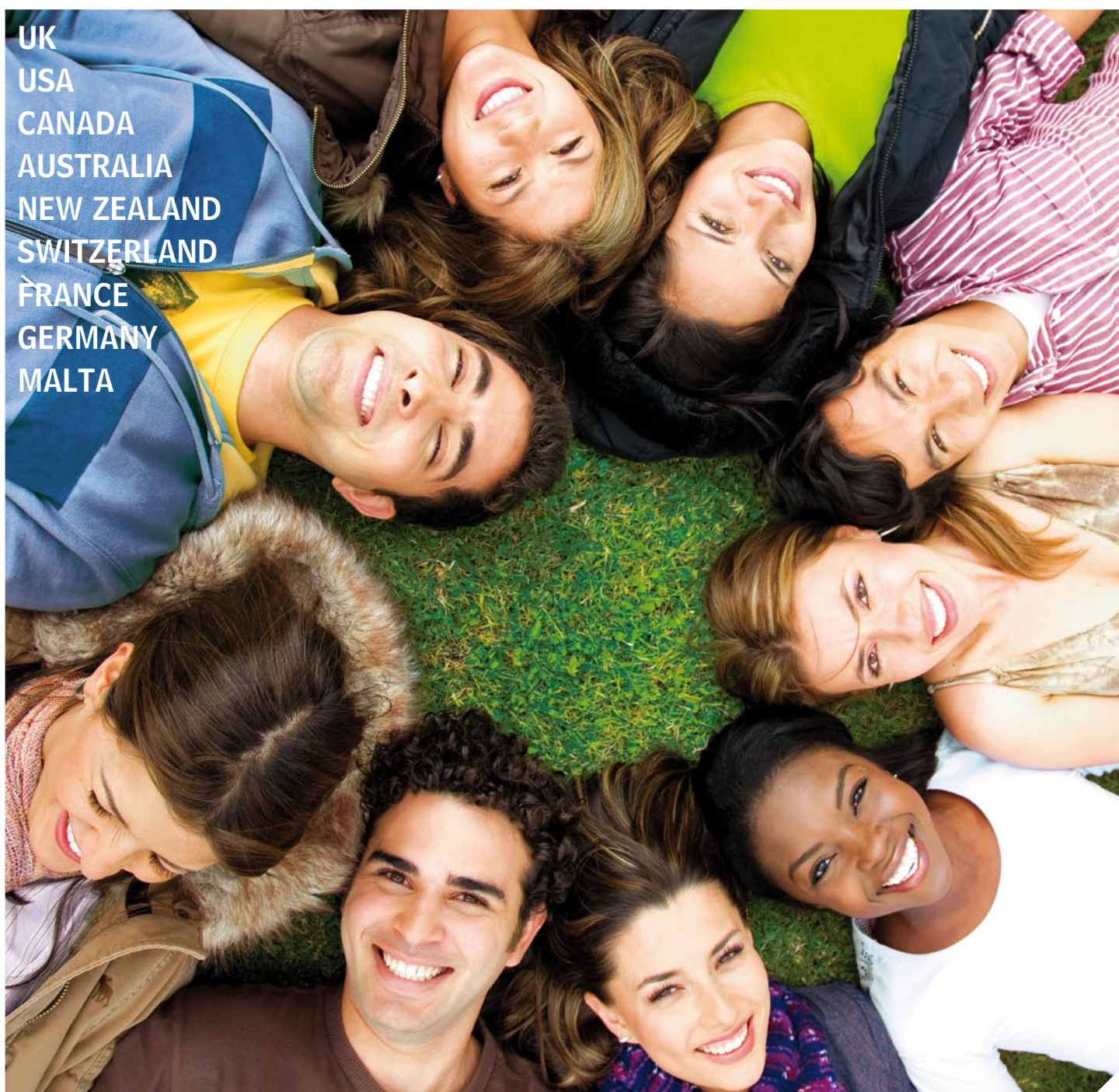


Language Studies International Prospectus 2010

OVER
40
YEARS
EXPERIENCE

Learn and live the language

UK
USA
CANADA
AUSTRALIA
NEW ZEALAND
SWITZERLAND
FRANCE
GERMANY
MALTA



www.lsi.edu



Welcome Willkommen Bienvenue Bienvenido



We have a record of over 40 years of successful language training, with many thousands of satisfied students worldwide. LSI centres provide the perfect environment for learning.

All our teachers provide a high level of care and attention to ensure you achieve your aims. These skills, combined with thorough course preparation, mean that each lesson will bring you a sense of achievement and progress.

At LSI we believe that the fastest and most effective way to learn a language is to learn it and live it in a country in which it is spoken, and we are committed to providing a total learning experience.

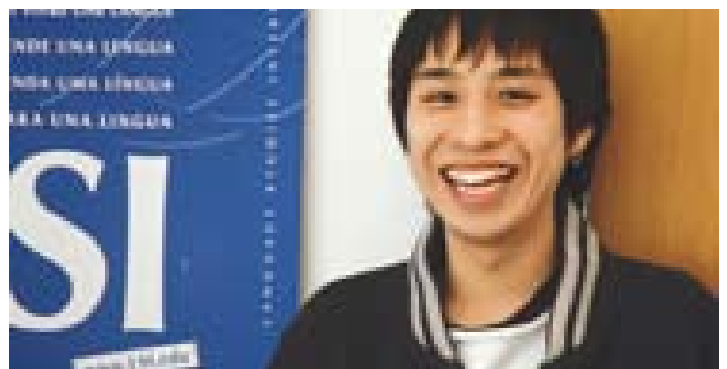
Whether you want to improve your language skills for professional, academic or personal reasons, LSI has the right course for you. The social programmes, quality accommodation and the support we provide during your stay will help you feel at home and ensure that you make maximum use of your time abroad. Our reputation is your guarantee.

We look forward to meeting you.

David Immanuel
LSI – Language Studies International

OUR EXPERIENCE IS YOUR SUCCESS

- LSI International Atmosphere.**
 You will meet students from all over the world and share the experience of learning a foreign language.
- LSI Language Centres.** Centrally located in some of the most desirable cities in the world, LSI students have access to a wide variety of social and cultural activities.
- LSI Small Classes.** Regular individual counselling & effective course design ensure that you make rapid progress in key communication skills.
- LSI Quality Inspected Homestays.** Contact with other students and local people makes sure that you practise these skills outside the classroom.
- LSI Teachers.** Our teachers are carefully selected and friendly, helpful and ready to listen.
- LSI Language Centres** are fully equipped with up-to-date materials and resources in comfortable surroundings.
- LSI Interactive Classroom.**
 At LSI, languages are taught in a dynamic and energetic way. We believe active communication in the classroom is the most effective way of learning – by speaking you will achieve fluency.
- LSI Finds the Right Level for You.**
 On the first day we establish your level and needs with a written test and an interview, and place you in the best class for your level.
- LSI Certificate.** You receive a certificate on your last day stating the course attended and the level attained, as proof of your language competence. A report is available if required.
- LSI Multimedia/Internet.**
 All LSI language centres are equipped with computer rooms for use during lessons or for self-study. Programmes range from intonation practice to grammar and vocabulary development.
- LSI FREE Wireless Internet Access** for all LSI students.
- LSI Multicentre Courses** allow you to learn and live the language in more than one LSI location.





The staff at the school are really helpful. The teachers are so funny, they make you laugh in the class. I have made some great friends here.



Agustine Liyanti, Fashion student, Indonesia



Contents

			Standard 20 / Standard 20 Plus	Intensive 30 / Intensive 30 Plus	Afternoon Course	One-to-One	9 Day Compact	Mini Group	Mini Group Plus	Executive Courses	Cambridge Examination Courses										English for Specific Purposes					
4		LSI General Courses																								
6		ISY-International School Year & Multicentre Courses																								
7		Preparation for University, College & Career																								
8		LSI Examination Courses																								
9		English for Specific Purposes																								
10		English for Business																								
10		Club 50+																								
11		Study and Work Programmes																								
12		Accommodation & Social Programme																								
SCHOOL			COURSES AVAILABLE																							
13	UK	Chichester	NEW																							
14		London Central																								
15		London Hampstead																								
16		Brighton																								
17		Cambridge																								
18	USA	San Diego																								
19		SF/Berkeley																								
20		New York																								
21		Boston																								
22	CANADA	Toronto																								
23		Vancouver																								
24	NEW ZEALAND	Auckland																								
25		Christchurch																								
26	AUSTRALIA	Brisbane																								
27	MALTA	Sliema																								
28	FRANCE	Paris																								
29	GERMANY	Frankfurt																								
30	SWITZERLAND	Zürich																								
31		LSI Executive Courses																								
34-35		LSI English for Young Learners																								
35		LSI Family Programme																								
36		LSI Language Centres																								



When I arrived at LSI, I started in the Pre-Intermediate class. I have moved up three levels and I feel more confident in speaking – and my progress is not over yet!



Nicolas Poilvert, France



General Courses



LSI Standard 20 Course

- 20 lessons per week (4 lessons per day)
- 1 lesson: 50 minutes
- 14 students max. per class
- Beginner to Advanced levels
- Course length: 1-50 weeks
- Age 16+

During the lessons you rapidly improve your communication skills in a variety of everyday situations. In 2 lessons each day you will cover the following areas: grammar, vocabulary, pronunciation. In a further 2 lessons you concentrate on: speaking, listening, reading, writing. You use a text book and a wide variety of materials and exercises including role-plays, authentic materials, newspapers and magazines.

LSI Intensive 30 Course

- 30 lessons per week (6 lessons per day)
- 1 lesson: 50 minutes
- 14 students max. per class
- Beginner to Advanced levels
- Course length: 1-50 weeks
- Age 16+

In the mornings (lessons 1-4) students have the same programme as the LSI Standard 20 course. In the afternoons (lessons 5-6) there are a range of options to suit you. All LSI schools offer fluency practice – these classes consolidate what you learn in the morning, improving your fluency and pronunciation through discussion on a wide range of topics. There is an emphasis on language for everyday situations. Topics may include: film and theatre, media studies, current events, politics, local culture, research using the internet. Other options vary, depending on your level, the language and the LSI language centre where you are studying.

Examples are:

Examination Skills. You prepare for a wide range of examinations (see page 8).

English for Academic Purposes.

You practise skills such as note taking and essay writing – essential for university.

English for Business (see page 10).

Please see LSI language centre pages for details of courses offered.

LSI Afternoon Course

- 10 lessons per week (2 lessons per day)
- 1 lesson: 50 minutes
- 14 students max. per class
- Intermediate to Advanced levels
- Course length: 1-50 weeks
- Conversational English/Business English/Exam Preparation
- Language centres: London Central, London Hampstead, Brighton, Cambridge, Paris, Zürich, Auckland and Christchurch.

Plus Courses

The combination of group and One-to-One learning is ideal when you want extra help with general skills or more specialised topics. Plus courses are 5 or 10 individual lessons. Our teachers work with you to develop your study plan. This course can supplement a Standard 20 or Intensive 30 Course.

Mini Group Courses

- 20, 30 or 40 lessons per week
- Participants: maximum 5
- Minimum age: 21 years
- Intermediate to Advanced levels
- Course length: 1-4 weeks
- 1 lesson: 45 minutes (in the USA 50 minutes)
- Courses begin: every Monday

If you want a personal and interactive approach you should also consider the LSI Mini group course. Mini group courses include general grammar and skills.

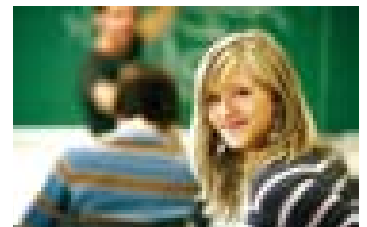
The focus on negotiations, presentations and meetings is relevant in business and non-business situations. It is an exciting alternative to LSI Standard 20 and Intensive 30 courses for more mature learners. (see page 31)

One-to-One

The fastest way to improve your language skills is through individual lessons. Individual lessons are ideal if you prefer a very personal focus on your own aims. (see page 31)



As course details may vary depending on the school, the individual LSI Centre pages will display the details where they differ.





Your Level And What You Can Achieve

For guidance on your level and what you can achieve, please see the diagram and the levels description.

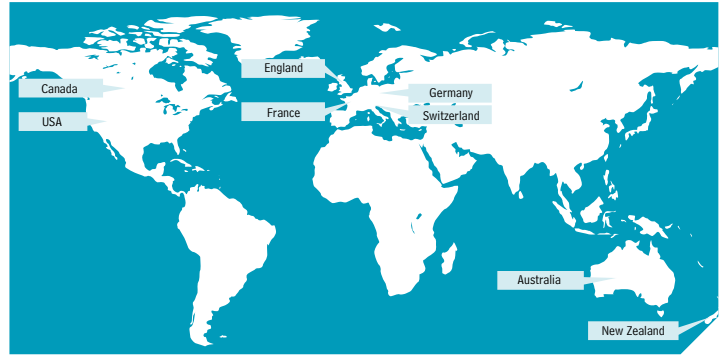
A Beginner You only know a few words and phrases.	<ul style="list-style-type: none"> • IELTS 1 • 4-6 weeks study 	
B Elementary You can communicate using very simple grammar and vocabulary.	<ul style="list-style-type: none"> • IELTS 2-3 • TOEFL iBT 0-8 • A1 • 4-6 weeks study 	
C Pre-Intermediate You take part in conversations using basic grammar and vocabulary with acceptable accuracy.	<ul style="list-style-type: none"> • IELTS 3-4 • TOEFL iBT 9-18 • TOEIC 200-250 • A2 • 8-12 weeks study 	
D Intermediate You have better control of grammar and vocabulary. Errors still frequent but good understanding of the language.	<ul style="list-style-type: none"> • IELTS 4-5 • TOEFL iBT 19-40 • TOEIC 375-500 • B1 • 8-12 weeks study 	Entry to vocational or academic preparation courses.
E Upper Intermediate You use a wide range of structures with a fair degree of accuracy.	<ul style="list-style-type: none"> • IELTS 5-6.5 • TOEFL iBT 41-64 • TOEIC 560-625 • B2 • FCE Grade B&C • 8-12 weeks study 	Entry to university degree and diploma courses, internships, or paid work in your host country.
F Advanced You communicate very well using most structures accurately.	<ul style="list-style-type: none"> • IELTS 6.5+ • TOEFL iBT 65+ • TOEIC 690+ • C1 & C2 • FCE Grade A • CAE • CPE • Progress varies 	Entry to postgraduate degree courses or work in your host country.





I have been at LSI for 6 weeks and I think it is the right place to learn English, meet new people from other countries and have fun. Classes are dynamic and there are a lot of extra activities.

Eduardo Cerame Gonzalez, Spain



International School Year (ISY)



This could be the most exciting year of your life. Achieve a high level of fluency in a language and make new friends from all over the world.

The ISY programme offers value for money and a great choice of course options. Whatever your needs, our highly trained, friendly staff will ensure that your year is a success.

- 24/30/36/48 week programmes
- 20/24/30 lessons per week
- Minimum age 16+
- Beginner to Upper Intermediate levels

An individual study plan is designed for you to suit your level and your aims. We continue to check your progress with regular meetings to make sure you achieve your aims. Your study plan options can include: general language classes (see page 4), examination courses (see pages 8-9 and individual LSI language centre pages for examinations offered), fluency practice, study skills classes and English for business.

The ISY programme is offered at all LSI language centres (except Frankfurt and Sliema) but please note that course options may vary between LSI centres. Some course options may only be available on the 30 lessons per week programme. We are happy to advise you as to which programme is most suitable for your needs.

Accommodation

All options are available (see page 12 and individual LSI language centre pages).

However, we recommend our carefully chosen homestays to ISY students, at least for the first month of your programme - the friendly welcome you receive helps you adjust quickly into life in a new country.

Work Experience can be arranged

for ISY students (see page 11 for terms and conditions).

LSI University Pathway

is also available to all ISY students (see page 7).

Multi-centre Courses

LSI Multicentre Courses allow you to split your LSI courses between two or more language centres.

EXAMPLES OF MULTICENTRE COURSES ARE THE FOLLOWING:

10 weeks Intensive 30:

- 6 weeks London Hampstead (UK)
- 4 weeks Brighton (UK)

20 weeks Standard 20:

- 12 weeks Berkeley/San Francisco (USA)
- 8 weeks Toronto (Canada)

36 weeks ISY:

- 12 weeks Paris (France)
- 12 weeks Zurich (Switzerland)
- 12 weeks London (UK)



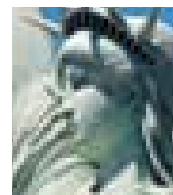
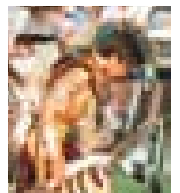
EXAMPLES OF YOUR ISY STUDY PLAN

30 lessons per week at LSI Vancouver for 36 weeks

Week 1-12	Week 13-24	Week 25-36
General English	FCE Exam Preparation	General English
English for Business	FCE Exam Preparation	TOEFL Preparation and Study Skills
Academic Counselling	Academic Counselling	Academic Counselling

30 lessons per week at LSI London Central for 36 weeks

Week 1-12	Week 13-24	Week 25-36
General English	IELTS Preparation and Study Skills	FCE Exam Preparation
Academic Counselling	Academic Counselling	Academic Counselling





Preparation for University, College and Career



Every year many students choose LSI to prepare for university in an English speaking country. Our well structured courses and personalised study plans mean that students know their aims will be met. General English programmes help students develop their English knowledge and skills to a level they need to do well in further studies. Exam preparation classes make sure they get the language entry requirements they need for successful application to university.

LSI University Pathway

The LSI University Pathway focuses on preparing you for university. It is available to students enrolled on an LSI Intensive or ISY 30 course (UK, USA, Canada, Australia & NZ) or LSI Foundation for Business (LSI Cambridge). The course length is based upon your individual aims and ability. In addition to intensive training for IELTS or TOEFL examinations, you will receive assistance in designing a study plan to help you achieve your goals. To qualify for the University Pathway you must have successfully graduated from high school.

We offer counselling to students which includes:

- Advice on suitable foundation, undergraduate and postgraduate courses
- Advice on IELTS and TOEFL score requirements
- Arranging visits to universities
- Assistance in completing applications and preparing for interviews

The University Pathway is free to students enrolled on LSI courses for a minimum of 12 weeks. However, individual university application fees may apply.

LSI students have been placed in universities such as:

- University of Warwick (UK)
- University of Manchester (UK)
- University of Nottingham (UK)
- University of Chichester (UK)
- London School of Economics (UK)
- Imperial College London (UK)
- Notre Dame de Nemour University (USA)
- San Francisco State University (USA)
- Golden Gate University (USA)
- Metropolitan College of New York (USA)
- California School of International Management (USA)
- College of the Desert (USA)
- Newbury College (USA)
- Bunker Hill Community College (USA)
- Cambridge College (USA)
- Suffolk University (USA)
- Seattle Central Community College (USA)
- Niagara College (Canada)
- Brock University (Canada)
- George Brown College (Canada)
- Kwantlen University College (Canada)
- Malaspina University College (Canada)
- The Art Institute of Vancouver (Canada)
- Central Queensland University (Australia)
- Griffith University (Australia)
- Queensland University of Technology (Australia)
- University of Queensland (Australia)
- University of Auckland (New Zealand)
- Auckland University of Technology (AUT) (New Zealand)
- UNITEC (New Zealand)
- Manukau Institute of Technology (New Zealand)

LSI Foundation Programme for Business Studies

This intensive 36 week course is a specialised course designed for entrance onto undergraduate Business degrees. The course combines IELTS preparation, academic skills development and English training with specialist subjects appropriate for Business Studies. Subjects include: Business Studies, Economics, British Culture, Information Technology. Successful completion of the Foundation Programme leads to guaranteed acceptance on a business related course at a British University.

- 30 lessons per week
- Upper Intermediate level and above
- You must have successfully graduated from high school
- Location: LSI Cambridge
- Start date: September 2010

Application Process

Enrolment on an LSI Intensive / ISY course (UK, USA, Canada, Australia & NZ) OR LSI Foundation for Business (LSI Cambridge)

Individual study plan selected

University course chosen with guidance of an LSI academic counsellor

Submission, by student, of original high school/university diplomas including English transcripts

Completed documents forwarded to universities

Conditional acceptance for the university course received or interviews arranged *

* Subject to individual university pre-requisites & government visa requirements



Exam Preparation



LSI students have a high success rate in examinations. We are happy to help you decide which examination is suitable for you.

Well structured course programmes, small classes and advice on exam strategies from experienced teachers ensure that you will be fully prepared for the examination. Please remember to check with us that the examination of your choice is available during your planned stay at LSI. Please see the LSI language centre pages for starting dates and details of courses offered.

Cambridge Preparation Courses

- 20/24/30 lessons per week
- 8/9/10/12 week programmes
- Minimum age 16+
- Intermediate level and above
- Starting dates and locations - see individual LSI language centre pages, for examination dates see pages 8-9

The course focuses on:

- Active use and accuracy of grammar
- Writing and reading skills
- Listening skills
- Extensive vocabulary practice
- Improving communication ability and comprehension
- Exam skills needed to obtain a high Cambridge exam grade

We also offer the Cambridge TKT exam at some centres where we run the English for Teaching course. For more details please refer to English for Teaching on page 9.

IELTS, TOEFL iBT & TOEIC Courses

- 30 lessons per week
- 4/8/10/12 week programmes
- Minimum age 16+
- Intermediate level and above
- Starting dates and locations - see individual LSI language centre pages, for examination dates see pages 8-9

Up to 20 lessons per week which concentrate on grammar input and language skills and 10 lessons per week which focus on study skills and exam practice. In these courses you will study:

- Accuracy with grammatical structures
- Communicative skills and ability
- Functional structures
- Vocabulary extension
- Active study skills
- Exam skills needed to obtain a high IELTS, TOEFL iBT or TOEIC score



Examination

ENGLISH

University of Cambridge

PET	Preliminary English Test
FCE	First Certificate in English
CAE	Certificate of Advanced English
CPE	Certificate of Proficiency in English
BEC	Business English Certificate
TKT	Teaching Knowledge Test

IELTS	International English Language Testing System
-------	---

TOEFL	Test of English as a Foreign Language
-------	---------------------------------------

TOEIC	Test of English for International Communication
-------	---

FRENCH

DELFB	Diplôme d'Etudes en Langue Française 1er Degré
-------	--

TEF	Test d'Evaluation de Français
-----	-------------------------------

TEFAQ	Test d'Evaluation de Français adapté au Québec
-------	--

CCIP	Diplôme de français professionnel (DFP)
------	---

GERMAN

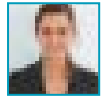
ZD	Zertifikat Deutsch
----	--------------------

GZ	Goethe Zertifikat
----	-------------------

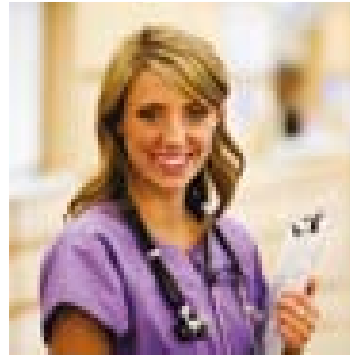
- Pre-Intermediate
- Intermediate
- Upper Intermediate
- Advanced



Since I want to study International Management I need as many foreign languages as possible in order to succeed with my application to University. The TEF (French test) and TOEFL are almost a standard must-have.



Inga Katharina Radziejewski, Germany



English for Specific Purposes



Level	Examination Dates	Description
●●●●	March, June, November, December	Accepted and highly regarded around the world as proof of competence in English
●●●	March, June, December	
●●	March, June, December	
●●	June, December	
●●●	March, May, June, November, December	Focuses on the core teaching knowledge needed to teach English
●●●	Contact schools for dates	
●●●	Frequently throughout the year	Requirement for enrolment at universities and colleges in the UK, Ireland, Australia and New Zealand
●●●	Frequently throughout the year	Requirement for admission to universities and colleges in the USA and Canada
●●●	Frequently throughout the year	Business English exam for international students and professionals
●●●	May, October	Recognised by the French Ministry of Education
●●●	Frequently throughout the year	Recognised by French speaking universities and companies
●●●	Frequently throughout the year	Recognised by Quebec's Ministry of Immigration for immigration applications
●●●	June, December	Recognised by the French Ministry of Education
●●●	Zürich: July, September, January-February Frankfurt: Once a month (Jan-Dec 2010)	Accepted almost universally as proof of proficiency in German
●●	July, September, January-February	Many universities and colleges set the GZ as an official entrance requirement

ENGLISH FOR PILOTS

This course covers all the ground theory required to gain a private or commercial pilot's licence. Practical flying sessions can also be arranged with a partner flying school at extra cost.

- Standard 20 plus 5 or 10 individual lessons per week*
- Course length: 4 weeks (20+10)* / 8 weeks (20 +5)*
- Intermediate to advanced levels
- ICAO compliant

Subjects covered: Aviation law, Licensing for Flight/Radio/Telephone Operators, Human Factors, Navigation, Meteorology and Aircraft Technology.

Starting dates: Every Monday
Language Centres: Auckland

ENGLISH FOR NURSING

This course is ideal for students who wish to study for a Bachelor of Nursing degree, or for nurses who wish to gain valuable work experience in an English speaking environment. In addition to lessons, you will have the opportunity to work part time in the Health Care industry.

- 30 lessons per week for 24 or 36 weeks
- IELTS score of 5.5 + required
- General English/English for Nursing (mornings)
- Academic English (afternoons)
- 20 hours a week paid work experience (weekends & evenings)

Nursing English modules include:

Language of the Hospitals, the Healthcare System, Health and Disease, Medical and Anatomical Terminology, Patient Assessment, Diet, Elderly Care, Alternative Treatments, and Medication.

Starting dates: Jan 5, Feb 1*, Mar 1, Apr 6, May 3, Jun 8, Jul 5, Aug 2, Sep 6, Oct 4, Nov 1, Dec 6

*Feb 2 in Auckland

Language Centres: Auckland and Christchurch

Please contact LSI for Work Placement fee.

ENGLISH FOR TEACHING

Aimed at speakers of other languages, this course provides a strong foundation in the key areas of teaching knowledge required for teachers of English.

- Afternoon option on LSI Intensive 30 course †
- 3 modules taken over 4 weeks
- Intermediate to advanced levels
- Minimum class size required to run the course/to sit the TKT exam

Modules covered: Language and Background to Language Learning and Teaching, Lesson Planning and Use of Resources for Language Teaching, Managing the Teaching and Learning Process. Students will be required to keep a portfolio.

The Cambridge ESOL examination, the TKT, may be offered at some centres depending on enrolment numbers. See school pages for further details and starting dates.

Starting dates: Please contact relevant LSI school

Language Centres: Vancouver, Toronto, Auckland, Christchurch, Brisbane, Cambridge, San Diego and New York

† Course can also be offered as a Standard 20 plus 5 individual lessons per week at some centres where enrolment numbers are low.

LSI can also provide other subject specific language courses to organised groups. Please contact LSI for a quote.



I really enjoyed the special atmosphere in the school. I had a wonderful time. Your students are very interesting and my homestay was gorgeous.



Ruhama Shomrat, Israel



English for Business



English is the international language of business. So we developed a special 12 module course designed to rapidly improve your business communication skills.

- Intermediate to Advanced levels
- Course length: 1-12 weeks
- 10 lessons per week
- Afternoon option on our LSI Intensive 30 course
- Can also be part of the ISY programme
- Module cycles begin: Jan 4, Mar 29, Jun 21, Sep 13
- Students can join every Monday

In each module, through a combination of written exercises, presentations, dialogues & role-plays in realistic business situations, you will practice and improve your skills in: business vocabulary and "buzz words", email, memo and letter writing, negotiating, interviewing and telephoning in English.

Module 1	International Trade
Module 2	Developing Leadership Skills & Teambuilding
Module 3	Effective Communication in Presentations
Module 4	Decision Making, Motivation & Delegation
Module 5	Marketing & Advertising
Module 6	E-Commerce, Technology & Innovation
Module 7	Banking / Stockmarkets
Module 8	Effective Communication in Meetings
Module 9	Recruitment Interviewing
Module 10	Business Law, Ethics & Environmental Issues
Module 11	Effective Communication in Selling & Negotiations
Module 12	Management Styles in International Companies



Club 50+



At LSI we welcome mature students of all ages, who are "young at heart" on all our courses throughout the year. In addition at specific locations, we organise social activities which suit the more mature student's interests.

- 20 lessons (50 minutes each) + afternoon activities
- Course length: 2 weeks
- Minimum age: 50
- Elementary to Intermediate levels

Example activities include: winery visits, rain forest excursions, Maori weaving, boat trips, theatre visits, Kew Botanical Gardens.

Contact school for prices of activities.

Language centres: Auckland, Christchurch, Brisbane, San Diego, New York, SF/Berkeley, Boston, Toronto, Vancouver, Paris & London Hampstead.

For starting dates please consult school pages.

We also welcome bookings from organised groups with special interests. Groups can be taught in separate classes with a specially designed social programme. Please contact us for a quote.



Study and Work Experience Programmes



An excellent opportunity to practise and develop your language skills in a business environment and gain valuable work experience.

The programme develops your communication skills so you can enjoy and benefit from your work placement. LSI offers unpaid work experience placements and paid positions.

These programmes are ideal for university-aged students or young professionals with limited experience.

ENGLAND

WORK EXPERIENCE (UNPAID)

EU Nationals

- LSI Intensive 30 course for a minimum of 4 weeks prior to work experience
- Work Experience Placement for 1-6 months
- Select 3 industry/professional areas that you would like to work in and we will then search for a suitable placement
- Applications must be received at least 12 weeks in advance
- Minimum age: 18+

WORK EXPERIENCE (PAID)

EU Nationals

- LSI Intensive 30 or Standard 20 course for a minimum of 4 weeks prior to work placement
- Full or part-time work placement in an unskilled job for 3-6 months earning at least £4.77 per hour
- Placements are available in hotels
- Applications must be received at least 12 weeks in advance
- Minimum age: 18+

CANADA

PAID INTERNSHIP

- Long-term skilled placements available for experienced professionals after completion of at least 6 months of an LSI Intensive 30 course
- The length of the placement cannot be longer than the course
- Assistance in applying for a Canadian Work Permit will be provided

UNPAID INTERNSHIP

- LSI Intensive 30 course for a minimum of 4 weeks prior to work experience
- Short term placement of 1-3 months (3 months recommended)
- The length of the placement cannot be longer than the course

WORKING HOLIDAY

- Opportunities to train and to work short-term (for entry-level salary)
- Minimum Placement Length: 4 weeks (12 weeks recommended)
- LSI Intensive 30 course for a minimum of 4 weeks prior to work experience
- Placement can exceed study length if student obtains Working Holiday Visa
- Countries which offer Working Holiday Visa: Scandinavia, Holland, Belgium, France, Italy, Japan, Czech Republic, Latvia

USA

WORK EXPERIENCE (UNPAID)

Short term placements

- LSI Intensive 30 course for 1-12 months prior to work placement
- Short term placement for 1-2 months
- Applications must be received at least 14 weeks in advance
- Ages: 18-30

Mid and Long Term Placements

- LSI Intensive 30 course for 4-8 weeks
- 3-9 months (mid term) or 10-18 months (long term) work experience placement on an Internship or Training Programme
- Applications must be received at least 14 weeks in advance
- Ages: 20-35
- Minimum education/professional requirements*

WORK EXPERIENCE (PAID)

- LSI Intensive 30 course for 4-8 weeks
- Long term placements on an Internship (12 months) or Training Programme (12 or 18 months)
- Placements are available in the following areas: business, management, marketing, civil engineering, architecture, hospitality management and tourism
- Applications must be received at least 14 weeks in advance
- Ages 20-35
- Minimum education/professional requirements*

*For the Internship Programme (IP) - Currently studying on OR arriving within 12 months of graduation from either a degree course or a certificate granting post-secondary academic institution

*For the Training Programme (TP) - 5 five years of related work experience OR 1 year related work experience plus a degree certificate or higher education certificate

PLACEMENT FEES

UK	£450
USA	
Short term unpaid	US\$980
Mid term unpaid	US\$1720 - US\$2080
Long term unpaid	US\$2425 - US\$3100
Long term paid	US\$2115 - US\$2680
CANADA	
Paid Internship	CD\$2000
Unpaid Internship	CD\$1200
Working Holiday	CD\$1200

Earn and Learn in Australia!

Students from a number of countries are able to travel to Australia on Working Holiday Visas. This means that you can

- Study up to 17 weeks
- Work for 6 months for one employer and then move to another job.
- Live in Australia for 1 year

LSI Brisbane offers help to Working Holiday Visa holders:

- English language courses to help you to improve your English
- Accommodation in homestay or shared accommodation in Brisbane.

If you have a Working Holiday Visa, you'll receive our Working Holiday Information Pack on your first day at LSI Brisbane. This tells you the sorts of jobs you can expect, pay rates, where to look for work and the forms you need to complete in Australia.

Check the Australian Government web site at www.immi.gov.au for information about Working Holiday Visa requirements.

New Zealand - Work Experience

Study and work in NZ with a 6 month student visa and IELTS 5, or on a Working Holiday Visa. Contact LSI Auckland for details.



I had a great time at LSI. It's such a good choice if you really want to improve your English skills.

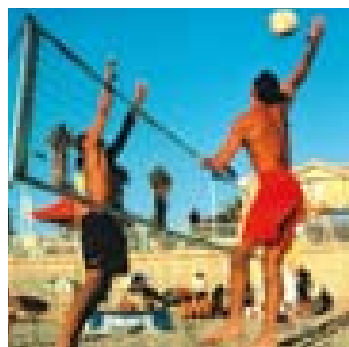
Ki Hyeon Lee , student, South Korea



Accommodation and Social Programme



As well as studying the language you should get to know your host country and its people. All LSI language centres offer a choice of accommodation: you may stay with a family, in a student house, a college residential hall, a residence hotel or a hotel. All our language centres offer an active and interesting social programme.



For further information on accommodation options, please view our accommodation brochures available on our website.

www.lsi.edu

LSI Homestays

Our carefully selected homestays offer friendly, comfortable surroundings in which you can experience what life is really like in your host country. Many of our students stay in touch with their host families for years afterwards.

LSI Residential / Student Hostels

Single and twin study bedrooms are available in student halls of residence where you can meet students from all around the world. Bathroom facilities are shared, rooms are cleaned regularly and bed linen is changed once a week. Catering arrangements differ, but most locations offer breakfast.

(Please check LSI language centre pages for availability)

Residence Hotels

More economical than hotels, residence hotels offer a more limited service. Weekly maid service is provided, and some residence hotels have kitchen facilities.

Hotels

We are happy to advise you on many different types of hotel close to our schools and make bookings at the hotel of your choice.

Self-catering Apartment / Flatshare in London

Apartments are located across London and accommodate between 4 and 6 people. Single, double and twin rooms are available. Apartments offer all essential facilities to the independent student.

LSI Social Programme

Whatever your interests or lifestyle, we will find an appropriate and enjoyable activity for you. Day trips, museum and gallery visits, theatre and cinema outings, restaurants and pubs, international events and sports fixtures are all regular features of our programme. Some activities are free and many others are offered at discounted prices. In addition, arrangements can be made in all locations for most sporting activities – just ask our staff.

Leisure and Language Programmes

Indulge your passion for sports with one of LSI's Leisure and Language Programmes. We offer many combinations including surfing at San Diego, skiing at Vancouver or Christchurch, tennis at Toronto, or sailing and scuba diving in Auckland. Please contact us for more details about these and other programmes.



NEW FOR 2010

Chichester

LSI Summer Programme
English in England

New for 2010, LSI introduces LSI Chichester, our unique residential summer school. Based on a university campus, students can 'learn English and live English' in the comfortable, safe surrounding of this impressive Campus.



LSI Chichester

Close to the centre of the town, LSI Chichester is based on the stunning University of Chichester campus. Housed in a variety of historic and modern buildings, the school offers spacious classrooms equipped with the latest technology, a learning resource and media centre, as well as nearby residence hall rooms with ensuite facilities. On campus there is also a variety of cafeterias, a sports centre and even an art gallery.



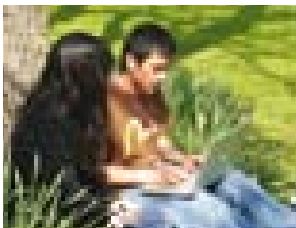
Sea, sandy beaches, picturesque harbours and beautiful rolling countryside are all within easy reach of the charming, historic city of Chichester.

Located on the South Coast, not far from the cosmopolitan towns of Brighton and Portsmouth, Chichester has a vibrant café culture and hosts several renowned festivals throughout the summer. An ideal destination for that quintessential English experience!



Leisure Programme

The campus' active Students' Union, two student bars and sports centre ensure there is plenty to do on campus. There are also plenty of pubs, bars, entertainment venues and local festivals in the town itself. Excursions can be arranged to nearby towns with Brighton, Portsmouth and London all within easy access.



General Courses

Standard 20 see p4

- Elementary to Advanced levels
- 15 students max.
- Course length: 1-8 weeks

Intensive 30 see p4

- Elementary to Advanced levels
- 15 students max.
- Course length: 1-8 weeks

Plus Courses see p4

- Elementary to Advanced levels

Starting dates: Each Monday from Jul 5 until Aug 23.
Courses end Aug 27.

Young Learners' Programme

see p34

Family Programme

see p35

LSI Prices in UK£

(includes tuition & half board accommodation)

General Course	1-8 wks
Standard 20 + single room with shared bathroom	505
Standard 20 + single room with private bathroom	555
Intensive 30 + single room with shared bathroom	565
Intensive 30 + single room with private bathroom	615

Courses for Individuals

Plus Course Supplement: 5 lessons	225
Plus Course Supplement: 10 lessons	450

Additional Fees

Registration fee	£60
Airport transfer (one way):	
Heathrow	£120
Gatwick	£60

Accommodation

Campus accommodation is provided as an integral part of the course and is offered on a half board or full board basis.

Supplements per week:	£40
Full board	£40





London Central

English in England

London is a world-class city of great diversity, offering unrivalled attractions. From culture, history and pageantry to some of the best nightlife to be found anywhere on earth, London has something for everybody.

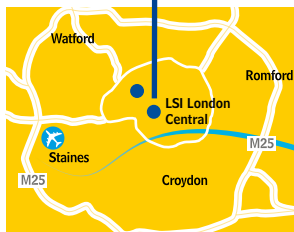


LSI London Central

LSI London Central is located in the heart of the city, close to universities and the fashionable entertainment district of Soho, in an area full of cafes, bars and pubs catering to the lively student population. The school is comfortable and modern, with free internet access and a wide range of self-study materials available.

Leisure Programme

A full and varied leisure programme allows students to experience the very best of London and the rest of England, with activities including visits to pubs and restaurants, theatre outings and trips to Oxford, Edinburgh and Stonehenge.



General Courses

Standard 20 see p4

- All levels

Intensive 30 see p4

- All levels

Afternoon Course see p4

- Intermediate to Advanced levels

Plus Courses see p4

- All levels

English for Business

see p10

- Intermediate to Advanced levels

Starting dates for Elementary to Advanced levels: each Monday

Starting dates for students at Beginner level: Jan 4, Feb 1, Mar 1, Apr 6, May 4, Jun 7, Jul 5, Aug 2, Sep 6, Oct 4, Nov 1, Dec 6

Cambridge Exam Courses

see p8

- First Certificate (FCE)
- Advanced (CAE)

Starting dates:

CAE 9 weeks / FCE 10 weeks: Jan 4

FCE & CAE 12 weeks: Mar 29, Sep 20

For examination dates, see p8-9

IELTS, TOEFL iBT & TOEIC Preparation

see p8

- Upper-Intermediate to Advanced levels

International School Year

see p6

- Beginner to Upper Intermediate levels

Starting dates: Jan 4, Feb 1, Mar 1, Apr 6, May 4, Jun 7, Jul 5, Aug 2, Sep 6, Oct 4, Nov 1, Dec 6

For examination dates, see p8-9

Work Experience

see p11

University Pathway

see p7

Executive Courses

One-to-One

9 Day Compact Course

Mini Group Courses

see p31-33

Public Holidays

No instruction on the following dates:

Apr 2, 5, May 3, 31, Aug 30

School is closed from

Dec 24, 2010 to Jan 3, 2011.

LSI Course Prices in UK£ Prices for tuition only

General Course	1 wk	2-3 wks	4-11 wks	12-15 wks	16-19 wks	20+ wks
Standard 20	200	190	180	170	160	155
Intensive 30 / Business	275	250	225	210	200	195
Afternoon Course	100	95	90	85	80	80

Exam Preparation Courses

	4 wks	8 wks	9 wks	10 wks	12 wks
TOEFL/TOEIC/IELTS	900	1800			
Cambridge Exam (20)			1620	1800	2040
Cambridge Exam (30)			2025	2250	2520

Courses for Individuals

Plus Course Supplement: 5 lessons/10 lessons	225/450
Individual lesson	45

ISY -

International School Year	24 wks	30 wks	36 wks	48 wks
20 lessons per week	3360	4200	4680	6240
30 lessons per week	3960	4950	5220	6960

Executive Course Prices in UK£ See page 33

Examination Fees

FCE/CAE	£110
---------	------

Additional Fees

Registration fee	£60
Placement fee – work experience	£450
Airport transfers (one way):	
Heathrow/London City	£70
Gatwick/Stansted	£90
Luton	£90

Accommodation

Homestay

Single room per week:			
Zone 2	B&B	£150	
	HB	£180	
Zone 3	B&B	£140	
	HB	£170	
Zones 4-6	B&B	£120	
	HB	£150	

Twin room prices on request

Executive Supplement

per week:	
Shared bathroom	£25
Private bathroom	£75

Supplements per week:

Christmas	£30
Summer (Jun 27-Aug 29)	£15

Self-catering Flat

per person, per week:	
Single room	£175
Double room	£120

Residential Accommodation

per person, per week:			
all year:			
Single room	B&B	£245	
Twin room	B&B	£205	
Jul-Aug:			
Single room	HB	£260	
Twin room	HB	£220	
Jun-Sep:			
Single room, self catering		£195	
Single room, self catering (private bathroom)		£225	

Hotel

2, 3 and 4 star hotel prices available on request.

Accredited by the



ENGLISHUK member

ETS AUTHORIZED TOEFL iBT CENTER

Member of the British Council



LSI Hampstead provided an excellent environment to learn English and have fun. It was one of the best experiences of my life. Thank you LSI! I will come back!



Gabriella Illés, TV producer, Hungary



London Hampstead

English in England

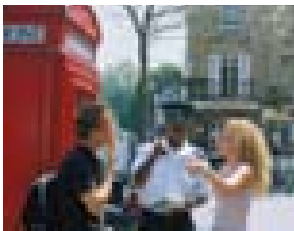


LSI London Hampstead

Located in a residential area just 3 miles from the centre, students benefit from nearby accommodation options and easy access to London's famous sights. The school occupies a spacious Victorian building with free wireless internet, a beautiful garden, language laboratory, table-tennis room, a lounge and a library with a wide variety of audio-visual study resources.

Leisure Programme

Barbecue parties and sports take place in the large garden. Other activities include pubs, clubs, musicals and weekend excursions. One of London's finest markets, trendy Camden Lock Market, is just a walk away.



A beautiful area to explore, charming Hampstead village has been home to many famous celebrities, writers and artists for years. Here you can visit the Freud Museum and the house of the poet, John Keats. Hampstead Heath, nearly 800 acres of countryside is only a few minutes' walk from the school!



General Courses

Standard 20 see p4

- Elementary to Advanced levels

Intensive 30 see p4

- Elementary to Advanced levels

Afternoon Course see p4

- Elementary to Advanced levels

Plus Courses see p4

- Elementary to Advanced levels

Starting dates: each Monday

Beginners at London Central only

Cambridge Exam Courses

- First Certificate (FCE)
- Advanced (CAE)
- Proficiency (CPE)

Starting dates:

CAE 9 weeks / FCE 10 weeks: Jan 4

FCE, CAE & CPE 12 weeks: Mar 29, Sep 20

For examination dates, see p8-9

IELTS, TOEFL iBT & TOEIC Preparation

- Intermediate to Advanced levels

International School Year see p6

- Elementary to Advanced levels

Starting dates: Jan 4, Feb 1, Mar 1, Apr 6, May 4, Jun 7, Jul 5, Aug 2, Sep 6, Oct 4, Nov 1, Dec 6

For examination dates, see p8-9

Club 50 + see p10

- Elementary to advanced levels

• 3 activities per week

Starting dates: Jan 4, Feb 1, Mar 1, Apr 6, May 4, Jun 7, Sep 6, Oct 4, Nov 1, Dec 6

Young Learners' Programme

see p34

Family Programme

see p35

Work Experience

see p11

University Pathway

see p7

Executive Courses One-to-One

see p31-33

Public Holidays

No instruction on the following dates: Apr 2, 5, May 3, 31, Aug 30

School is closed from Dec 24, 2010 to Jan 3, 2011.

LSI Course Prices in UK£

General Course	Prices for tuition only					
	1 wk	2-3 wks	4-11 wks	12-15 wks	16-19 wks	20+ wks
Standard 20	195	185	175	165	155	150
Intensive 30	270	245	220	205	195	190
Afternoon Course	100	95	90	85	80	80
Club 50 + (wks)	370(2)					

Exam Preparation Courses

	4 wks	8 wks	9 wks	10 wks	12 wks
TOEFL/TOEIC/IELTS	880	1760		2460	
Cambridge Exam (20)			1575	1750	1980

Courses for Individuals

Plus Course Supplement: 5 lessons/10 lessons	225/450
Individual lesson	45

ISY –

International School Year	24 wks	30 wks	36 wks	48 wks
20 lessons per week	3240	4050	4500	6000
30 lessons per week	3840	4800	5040	6720

Executive Course Prices in UK£

See page 33

Examination Fees

FCE/CAE/CPE	£110
TOEIC	£80

Additional Fees

Registration fee	£60
Placement fee – work experience	£450

Airport transfers (one way):

Heathrow/London City	£70
Gatwick/Stansed	£90
Luton	£90

Accommodation Homestay

Single room per week:

Zone 2	B&B	£150
	HB	£180
Zone 3	B&B	£140
	HB	£170

Zones 4-6	B&B	£120
	HB	£150

Twin room prices on request

Executive Supplement

per week:	
Shared bathroom	£25
Private bathroom	£75

Supplements per week:

Christmas	£30
Summer (Jun 27-Aug 29)	£15

Self-catering Flat

per person, per week:	
Single room	£175
Double room	£120

Residential Accommodation

Jun 26-Sep 13, per week:	
Single room B&B	£210

Student residence

Student residence (all year): prices available on request

Hotel

2, 3 and 4 star hotel prices available on request.





The atmosphere is really great at LSI, not only because of the wonderful teachers but also because of my classmates. I received lots of help from all the teachers and my English level has improved so much.



Roberto Villoslada, lawyer, Spain



Brighton

English in England

Only 50 minutes from London by train, Brighton is a vibrant city situated between the sea and the beautiful Sussex Downs. Often referred to as London-By-Sea, Brighton boasts two universities and amongst the largest arts and comedy festivals in the UK.

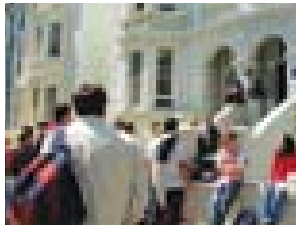


LSI Brighton

The school occupies a Victorian building with a garden on a quiet street in Hove, an exclusive residential area of Brighton. It is 5 minutes' walk from the beach and from Hove train station. Shops, coffee houses, pubs, restaurants and a leisure centre are all nearby.

Leisure Programme

The social programme includes parties and barbecues, quiz and games nights, nightclubs and discos, day and weekend trips to London and other parts of Britain and Europe. Activities such as golf and horse riding can also be arranged.



General Courses

Standard 20 see p4

- Elementary to Advanced levels

Intensive 30 see p4

- Elementary to Advanced levels

Afternoon Course see p4

- Intermediate to Advanced levels

Plus Courses see p4

- Elementary to Advanced levels

Starting dates: each Monday

Beginners at London Central only

English for Business

see p10

- Intermediate to Advanced levels

For starting dates please contact LSI Brighton

Cambridge Exam Courses

see p8

- First Certificate (FCE)

Starting dates:

FCE 10 weeks: Jan 4

FCE 12 weeks: Mar 29, Sep 20

For examination dates, see p8-9

Limited space, please check for availability

IELTS, TOEFL iBT & TOEIC Preparation

see p8

- Intermediate to Advanced levels

International School Year see p6

- Elementary to Upper Intermediate levels

Starting dates: Jan 4, Feb 1, Mar 1, Apr 6, May 4, Jun 7, Jul 5, Aug 2, Sep 6, Oct 4, Nov 1, Dec 6

For examination dates, see p8-9

Young Learners' Programme

see p34

Family Programme

see p35

Work Experience

see p11

University Pathway

see p7

Public Holidays

No instruction on the following dates:

Apr 2, 5, May 3, 31, Aug 30

School is closed from Dec 24, 2010 to Jan 3, 2011.

LSI Course Prices in UK£

Prices for tuition only

General Course 1 2-3 4-11 12-15 16-19 20+

Prices per week wk wks wks wks wks wks

Standard 20 195 185 175 165 155 150

Intensive 30 / 270 245 220 205 195 190

Business

Afternoon Course 100 95 90 85 80 80

Exam Preparation Courses

TOEFL/TOEIC/IELTS 4 8 10 12

Cambridge Exam (20) 880 1760 1750 1980

Cambridge Exam (30) 2200 2460

Courses for Individuals

Plus Course Supplement: 5 lessons/10 lessons 225/450

Individual lesson 45

ISY - International School Year

24 30 36 48

wks wks wks wks

20 lessons per week 3240 4050 4500 6000

30 lessons per week 3840 4800 5040 6720

Executive Course Prices in UK£

Examination Fees

FCE £110

Additional Fees

Registration fee £60

Placement fee – work experience £450

Airport transfers (one way):

Heathrow £120

Gatwick £60

Accommodation

Homestay

per person, per week:

Single room B&B £105

HB £130

Twin room* B&B £95

HB £120

Supplements per week:

Executive £40

Christmas £30

Summer (Jun 27-Aug 29) £15

Self-catering

Accommodation

Abbey, all year, per person, per week (subject to availability).

Accommodation prices will be given on request.

Hotel

2, 3 and 4 star hotel prices available on request.

Accredited by the



Member of the British Council



Cambridge

English in England

Many of the university colleges have amazing architecture and beautiful grounds that are open to the public. There are many traditional Cambridge pastimes to enjoy, such as spending an afternoon on the River Cam in a flat-bottomed boat called a punt.



LSI Cambridge

LSI Cambridge is perfectly situated for enjoying this picturesque, ancient university town. The school is in a quiet residential area, 15 minutes walk from the town centre. There is a lounge, a large garden, a learning centre with free internet access and self study materials.

Leisure Programme

The social programme includes barbecues, nightclubs and sports. There are popular day and weekend excursions to places such as London, Stonehenge and Stratford-Upon-Avon (Shakespeare's birthplace). Trips as far afield as Scotland or France can also be arranged.



General Courses

Standard 20 see p4

- Elementary to Advanced levels

Intensive 30 see p4

- Elementary to Advanced levels

Afternoon Course see p4

- Elementary to Advanced levels

Plus Courses see p4

- Elementary to Advanced levels

English for Business see p10

- Intermediate to Advanced levels
- Starting dates: each Monday
Beginners at London Central only.

Cambridge Exam Courses see p8

- First Certificate (FCE)
- Advanced (CAE)

Starting dates:

CAE 9 weeks / FCE 10 weeks: Jan 4

FCE & CAE 12 weeks: Mar 29, Sep 20

For examination dates, see p8-9

IELTS, TOEFL iBT & TOEIC Preparation see p8

- Intermediate to Advanced levels

International School Year see p6

- Elementary to Upper Intermediate levels
- Starting dates: Jan 4, Feb 1, Mar 1, Apr 6, May 4, Jun 7, Jul 5, Aug 2, Sep 6, Oct 4, Nov 1, Dec 6

For examination dates, see p8-9

University Foundation Programme see p7

- Upper intermediate level and above

English for Teaching see p9

- Intermediate level and above
- Minimum student number: 10

Contact school for dates

Work Experience see p11

University Pathway see p7

Executive Courses One-to-One 9 Day Compact Course see p31-33

Public Holidays

No instruction on the following dates:
Apr 2, 5, May 3, 31, Aug 30

School is closed from Dec 24, 2010 to Jan 3, 2011.

LSI Course Prices in UK£

Prices for tuition only

General Course	1 wk	2-3 wks	4-11 wks	12-15 wks	16-19 wks	20+ wks
Standard 20	200	190	180	170	160	155
Intensive 30 / Business	275	250	225	210	200	195
Afternoon Course	100	95	90	85	80	80

Exam Preparation Courses	4 wks	8 wks	9 wks	10 wks	12 wks
TOEFL/TOEIC/IELTS	900	1800			
Cambridge Exam (20)			1620	1800	2040
Cambridge Exam (30)			2025	2250	2520

University Preparation Programmes	Price
University Foundation Programme (wks)	6660(36)

English for Specific Purposes	Price
English for Teaching (wks)	900(4)

Courses for Individuals	Price
Plus Course Supplement: 5 lessons/10 lessons	225/450
Individual lesson	45

ISY - International School Year	24 wks	30 wks	36 wks	48 wks
20 lessons per week	3360	4200	4680	6240
30 lessons per week	3960	4950	5220	6960

Examination Fees

FCE/CAE	£110
---------	------

Additional Fees

Registration fee	£60
Placement fee - work experience	£450

Airport transfers (one way):

Heathrow	£135
Gatwick	£150
Stansted	£75
Luton	£85

* Only when two students book together for the same start date

Residential Accommodation

per week:

Centrepoint (all year)	
------------------------	--

Single room	£165
Self-catering	

Sedley Ct (Jun 27-Aug 22)

Single room	£165
Self-catering	

Accommodation Homestay

per person, per week:

Single room	B&B	£115
	HB	£140
Twin room*	B&B	£105
	HB	£130

Hotel

2, 3 and 4 star hotel prices available on request.

Executive Course Prices in UK£ See page 33

Accredited by the



ENGLISHUK member

ETS AUTHORIZED TOEFL iBT CENTER

Member of the University of Cambridge FEEL Association

“ Thank you to all of my teachers and to all of the staff at LSI. I have learned a lot and have really improved my English especially my speaking, listening and grammar. I will miss you all.



Bashir Mahmud, Libya



San Diego

English in the USA

Often called “America’s Finest City”, San Diego lies at the southern most point of California on a beautiful natural harbour along the 70 miles of Pacific coastline between Los Angeles and Mexico.

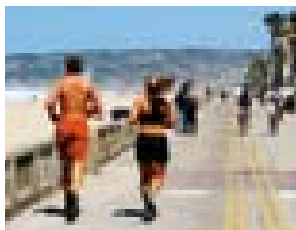
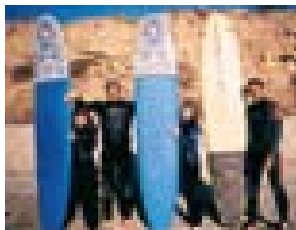
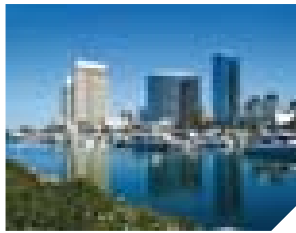


LSI San Diego

LSI San Diego is located in a modern building in the heart of the city, close to all amenities and within easy walking distance of such attractions as San Diego Zoo, the Gaslamp District, Balboa Park and the San Diego Bay. A student resource room in the building offers a library and multimedia computers for EFL self-study.

Leisure Programme

Fantastic weather and the city’s proximity to beaches, islands, mountains and deserts mean that recreational opportunities abound in the San Diego region. Social activities include beach parties, surfing, sailing and even snow skiing, and organised trips to Los Angeles, Las Vegas and Mexico.



General Courses

Standard 20 see p4

- All levels

Intensive 30 see p4

- All levels

Plus Courses see p4

- All levels

English for Business

see p10

- Intermediate to Advanced levels

Starting dates for Elementary to Advanced levels: each Monday (1st Monday of every month is recommended)

Starting dates for students at Beginner level: Jan 4, Feb 1, Mar 1, Apr 6, May 3, Jun 7, Jul 6, Aug 2, Sep 7, Oct 4, Nov 1, Dec 6

Cambridge Exam Courses

see p8

- First Certificate (FCE)
- Advanced (CAE)
- Proficiency (CPE)

Starting dates:

FCE, CAE & CPE 10 weeks: Jan 4

FCE, CAE & CPE 12 weeks: Mar 29, Sep 20

For examination dates, see p8-9
Limited space, please check for availability

TOEFL iBT Preparation

see p8

- Afternoon option on LSI Intensive 30 course
- Intermediate to Advanced levels

International School Year

see p6

- Beginner to Upper Intermediate levels

Starting dates: Jan 4, Feb 1, Mar 1, Apr 6, May 3, Jun 7, Jul 6, Aug 2, Sep 7, Oct 4, Nov 1, Dec 6

For examination dates, see p8-9

English for Teaching

see p9

- Intermediate level and above
- Minimum student number: 6 (for course), 10 (for exam)

Contact school for dates

Club 50+

see p10

- Elementary to intermediate levels
- 3 activities per week

Starting dates: Jan 4, Feb 1, Mar 1, Apr 6, May 3, Jun 7, Sep 7, Oct 4, Nov 1, Dec 6

Young Learners’ Programme

see p35

Family Programme

see p35

Work Experience

see p11

University Pathway

see p7

Executive Courses

One-to-One

9 Day Compact Course

Mini Group Courses

see p31-33

Public Holidays

No instruction on the following dates:

Jan 18, Feb 15, Apr 2, 5, May 31, Jul 5, Sep 6, Oct 11, Nov 25, 26

School is closed from Dec 24, 2010 to Jan 2, 2011.

LSI Course Prices in US\$

Prices for tuition only

General Course	1	2-3	4-11	12-15	16-19	20+
Prices per week	wk	wks	wks	wks	wks	wks
Standard 20	360	305	275	255	245	235
Intensive 30 / Business	455	370	340	325	310	295
Club 50 + (wks)						610(2)

Exam Preparation Courses	4	8	10	12
	wks	wks	wks	wks
TOEFL	1360	2720	3900	3900
Cambridge Exam (30)	3400			3900

English for Specific Purposes

English for Teaching (wks) 1360(4)

Courses for Individuals

Plus Course Supplement: 5 lessons/10 lessons 380/760
Individual lesson 76

ISY – International School Year	24	30	36	48
	wks	wks	wks	wks
20 lessons per week	5400	6750	7740	10320
30 lessons per week	6360	7950	9180	12240

Examination Fees

FCE/CAE/CPE US\$350

Additional Fees

Registration fee US\$120

Placement fee – work experience from US\$980 to US\$3100, see p11

Airport transfers (one way) US\$85

Accommodation

per person, per week: Accommodation placement fee US\$75

Homestay

per person, per week:

Single room B&B US\$185

HB US\$250

Supplements

per week: Executive US\$80

Christmas US\$30

Summer US\$30

(Jun 27 - Aug 29)

Residential Accommodation

per person, per week:

Single room, no meals:

Shared bathroom US\$290

Private bathroom US\$340

Double room*, no meals:

Private bathroom US\$220

* Only when two students book together for the same dates

Hotel

2, 3 and 4 star hotel prices available on request.



Our programs are accredited by The Accrediting Council on International Education (ACIIE), the International Association of Universities (IAU), the Department of Education.



American Association of Intensive English Programs





San Francisco/ Berkeley

English in the USA



LSI Berkeley

The school occupies a two-storey building in downtown Berkeley with indoor and outdoor common areas and a large, glass-covered atrium, close to the station and the university campus. There is free internet use in two student computer rooms, as well as a kitchen, library and study rooms.

Leisure Programme

Berkeley, home of the prestigious University of California, is a colourful, student-oriented city in Northern California, just across the bay from San Francisco, and abounds with restaurants, cinemas, cafes and bookshops. The Bay Area affords a wealth of famous attractions, such as the Golden Gate Bridge, Fisherman's Wharf and Alcatraz, and visits to places such as the Wine Country and the Monterey Peninsula are easily arranged.



The San Francisco Bay Area is a beautiful part of California, with a more temperate climate than the surrounding area, and its architecture and landmarks are famous across the world. One of the most laidback and friendly places in the world, San Francisco and the Bay Area offer everything the visitor could want.



General Courses

Standard 20 see p4
 • Elementary to Advanced
Intensive 30 see p4
 • Elementary to Advanced
Plus Courses see p4
 • Elementary to Advanced
English for Business see p10
 • Intermediate to Advanced levels
 Starting dates: each Monday (1st Monday of every month is recommended)

Cambridge Exam Courses

see p8
 • First Certificate (FCE)
 • Advanced (CAE)
 Starting dates:
 FCE & CAE 12 weeks:
 Mar 29, Sep 20
 For examination dates, see p8-9
 Limited space, please check for availability

TOEFL iBT Preparation

see p8
 • Afternoon option on LSI Intensive 30 course
 • Intermediate to Advanced levels
International School Year see p6
 • Elementary to Upper Intermediate levels
 Starting dates: Jan 4, Feb 1, Mar 1, Apr 6, May 3, Jun 7, Jul 6, Aug 2, Sep 7, Oct 4, Nov 1, Dec 6
 For examination dates, see p8-9

Club 50+ see p10

• Elementary to intermediate levels
 • 3 activities per week
 Starting dates: Jan 4, Feb 1, Mar 1, Apr 6, May 3, Jun 7, Sep 7, Oct 4, Nov 1, Dec 6

Work Experience

see p11
University Pathway see p7

Executive Courses

One-to-One
9 Day Compact Course
Mini Group Courses see p31-33

Public Holidays

No instruction on the following dates:
 Jan 18, Feb 15, Apr 2, 5, May 31, Jul 5, Sep 6, Oct 11, Nov 25, 26
 School is closed from Dec 24, 2010 to Jan 2, 2011.

LSI Course Prices in US\$

	Prices for tuition only					
General Course	1 wk	2-3 wks	4-11 wks	12-15 wks	16-19 wks	20+ wks
Standard 20	360	305	275	255	245	235
Intensive 30 / Business	455	370	340	325	310	295
Club 50 + (wks)						610(2)

Exam Preparation Courses

	4 wks	8 wks	12 wks
TOEFL	1360	2720	3900
Cambridge Exam (30)			3900

Courses for Individuals

Plus Course Supplement: 5 lessons/10 lessons	380/760
Individual lesson	76

ISY - International School Year	24 wks	30 wks	36 wks	48 wks
20 lessons per week	5400	6750	7740	10320
30 lessons per week	6360	7950	9180	12240

Executive Course Prices in US\$

See page 33

Examination Fees

FCE/CAE US\$350

Additional Fees

Registration fee US\$120
 Placement fee – work experience from US\$980 to US\$3100, see p11
 Airport transfers US\$95 (one way)

Accommodation

Accommodation placement fee US\$75

Homestay

per person, per week:
 Single room B&B US\$185
 HB US\$250

Supplements per week:

Executive US\$80
 Christmas US\$30
 Summer US\$30 (Jun 27-Aug 29)

Residence Halls Accommodation

Tau House, all year, per person, per week:
 Room + 18 meals
 Double room US\$475
 Triple room US\$400

A US\$200 key/ damage refundable required when booking.

Downtown Berkeley YMCA, all year: Single and double room prices available on request. A US\$50 fee is included per booking.
 MLK House, Borneo House, Hillside Durrant, Prospect and College Residences. Prices and details available on request

Hotel

2, 3 and 4 star hotel prices available on request.





LSI is a very good language school. I love the location, it's great to study English in NY. The teachers are very professional and really care about my progress. The classes are very small so I get a lot of personal attention. I've improved my English a lot in a very short time.



Tae Ran Lee, Korean movie star



New York

English in the USA

As the major business and cultural centre of the United States, New York is rightly proud of its leading role and long tradition in American history. From commerce to politics, ballet to sporting events, New York has it all.



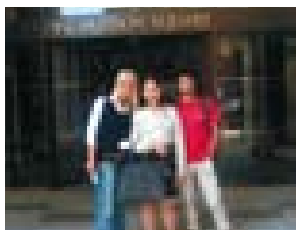
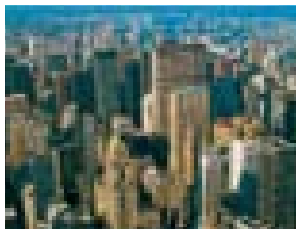
LSI New York

Located on the Manhattan campus of the Metropolitan College of New York (MCNY) in SoHo, near the Financial District, LSI New York is at the very heart of this most cosmopolitan of cities. Facilities include a library, a lounge, and two computer labs with over 40 computers offering free internet access.



Leisure Programme

With its 24-hour buzz, excellent restaurants, museums and famous landmarks such as the Statue of Liberty and the Empire State Building, New York's cultural and entertainment possibilities are limitless, and this is reflected in our busy and varied social programme.



General Courses

Standard 20

- All levels
- Age : 18+

Intensive 30

- All levels
- Age : 18+

Plus Courses

- All levels

English for Business

- Intermediate to Advanced levels
- Age : 18+

Starting dates for Elementary to Advanced levels: each Monday (1st Monday of every month is recommended)
Starting dates for students at Beginner level: Jan 4, Feb 1, Mar 1, Apr 6, May 3, Jun 7, Jul 6, Aug 2, Sep 7, Oct 4, Nov 1, Dec 6

Cambridge Exam

- First Certificate (FCE)
- Advanced (CAE)

• 10 lessons per week as part of Intensive 30

Starting dates:
FCE & CAE 12 weeks:
Mar 29, Sep 20

For examination dates, see p8-9
Limited space, please check for availability

TOEFL iBT Preparation

- Afternoon option on LSI Intensive 30 course
- Intermediate to Advanced levels

International School Year

- Beginner to Upper Intermediate levels
- Starting dates: Jan 4, Feb 1, Mar 1, Apr 6, May 3, Jun 7, Jul 6, Aug 2, Sep 7, Oct 4, Nov 1, Dec 6

For examination dates, see p8-9

English for Teaching

- Intermediate level and above
 - Minimum student number: 6
- Contact school for dates

Club 50+

- Elementary to intermediate levels
 - 3 activities per week
- Starting dates: Jan 4, Feb 1, Mar 1, Apr 6, May 3, Jun 7, Sep 7, Oct 4, Nov 1, Dec 6

Work Experience

see p11
University Pathway
see p7

Executive Courses

One-to-One
Mini Group Courses
see p31-33

Public Holidays

No instruction on the following dates:
Jan 18, Feb 15, Apr 2, 5, May 31, Jul 5, Sep 6, Oct 11, Nov 25, 26

School is closed from Dec 24, 2010 to Jan 2, 2011.

LSI Course Prices in US\$

	1 wk	2-3 wks	4-11 wks	12-15 wks	16-19 wks	20+ wks
General Course						
Standard 20	360	325	295	275	265	255
Intensive 30 / Business	455	400	370	345	330	315
Club 50+ (wks)	650(2)					

Exam Preparation Courses

	4 wks	8 wks	12 wks
TOEFL	1480	2960	4140
Cambridge Exam (30)	4140		

English for Specific Purposes

English for Teaching (wks)	1480(4)
----------------------------	---------

Courses for Individuals

Plus Course Supplement: 5 lessons/10 lessons	405/810
Individual lesson	81

ISY - International School Year

	24 wks	30 wks	36 wks	48 wks
20 lessons per week	5640	7050	8100	10800
30 lessons per week	6600	8250	9540	12720

Executive Course Prices in US\$

See page 33

Examination Fees

FCE/CAE	US\$425
---------	---------

Additional Fees

Registration fee*	US\$120
* 10% if your tuition fees are below US\$1000	
Placement fee - work experience from US\$980 to US\$3100, see p11	
Airport transfers (one way)	US\$120

Accommodation

Accommodation placement fee	US\$75
-----------------------------	--------

Homestay

Single room per person, per week:	
Outside Manhattan:	
B&B	US\$260
HB	US\$325
In Manhattan:	
B&B	US\$485

Supplements per week:	
Executive (in Manhattan, private bathroom)	US\$180
Christmas	US\$30
Summer (Jun 27-Aug 29)	US\$30

Residential Accommodation

per person, per week:	
YMCA Residence in Manhattan, no meals (includes access to sports and fitness facilities)	
Single room, shared bath	US\$510
Twin room**, shared bath	US\$305
Chelsea Apartment (shared bathroom, no meals)	
Single room	US\$535
Twin room**	US\$315

** per person; only available for students booking and arriving together

Hotel

2, 3 and 4 star hotel prices available on request.





Boston

English in the USA

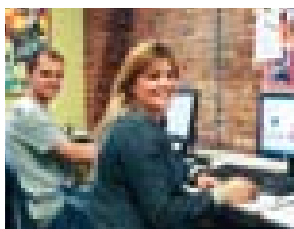
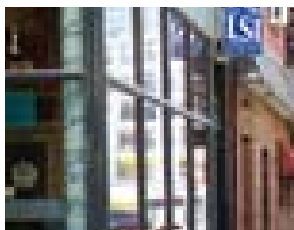


LSI Boston

LSI Boston is situated in a commercial brownstone on the borders of Chinatown and the Theatre and Financial Districts. Many classrooms feature the exposed red brick walls typical of the local architecture. Among the facilities provided for students are a computer room and lounge, with daily newspapers available.

Leisure Programme

Social activities include museum trips, historical walking tours, baseball games, snowboarding and weekend trips to Cape Cod, New York and Montreal.



General Courses

Standard 20 see p4
 • Elementary to Advanced
Intensive 30 see p4
 • Elementary to Advanced
Plus Courses see p4
 • Elementary to Advanced
English for Business see p10
 • Intermediate to Advanced levels
 Starting dates: each Monday (1st Monday of every month is recommended)

TOEFL iBT Preparation

see p8
 • Afternoon option on LSI Intensive 30 course
 • Intermediate to Advanced levels
International School Year see p6
 • Elementary to Upper Intermediate levels
 Starting dates: Jan 4, Feb 1, Mar 1, Apr 6, May 3, Jun 7, Jul 6, Aug 2, Sep 7, Oct 4, Nov 1, Dec 6
 For examination dates, see p8-9

Club 50+ see p10

• Elementary to intermediate levels
 • 3 activities per week
 Starting dates: Jan 4, Feb 1, Mar 1, Apr 6, May 3, Jun 7, Sep 7, Oct 4, Nov 1, Dec 6

Work Experience

see p11

University Pathway

see p7

Executive Courses

One-to-One
9 Day Compact Course
Mini Group Courses
 see p31-33

Public Holidays

No instruction on the following dates:
 Jan 18, Feb 15, Apr 2, 5, May 31, Jul 5, Sep 6, Oct 11, Nov 25, 26

School is closed from Dec 24, 2010 to Jan 2, 2011.

LSI Course Prices in US\$

Prices for tuition only

General Course	1 wk	2-3 wks	4-11 wks	12-15 wks	16-19 wks	20+ wks
Standard 20	360	305	275	255	245	235
Intensive 30 / Business	455	370	340	325	310	295
Club 50 + (wks)						610(2)

Exam Preparation Courses

	4 wks	8 wks	12 wks
TOEFL	1360	2720	3900

Courses for Individuals

Plus Course Supplement: 5 lessons/10 lessons	380/760
Individual lesson	76

ISY –

International School Year	24 wks	30 wks	36 wks	48 wks
20 lessons per week	5400	6750	7740	10320
30 lessons per week	6360	7950	9180	12240

Executive Course Prices in US\$

See page 33

Additional Fees

Registration fee	US\$120
Placement fee – work experience from US\$980 to US\$3100, see p11	
Airport transfers (one way)	US\$90

Accommodation

Accommodation placement fee	US\$75
-----------------------------	--------

Homestay

per person, per week:

Single room	B&B	US\$185
	HB	US\$250

Supplements per week:

Executive	US\$80
Christmas	US\$30
Summer (Jun 27-Aug 29)	US\$30

Residence Halls Accommodation

(all year, 2-4 people per room, including breakfast & dinner), per person:

One wk	US\$575
Two wks	US\$995
Three wks	US\$1290
Four wks	US\$1440
Extra night	US\$116

A US\$200 key/damage deposit will be charged and will be refunded upon return of key.

ESL Townhouse (no meals) per person, per week:
 Single room US\$375
 Double room US\$250

A US\$200 key/damage deposit will be charged and will be refunded upon return of key. In addition a US\$200 non refundable booking fee will be charged

Boston YMCA – The Berkeley Residence: Single and double rooms available on request.

Hotel

2, 3 and 4 star hotel prices available on request.



All programs are accredited by the Council on Educational Standards for International Education, Inc. (CESI) and are approved by the Ministry of Education of the United States.



Association of American International English Programs



Toronto

English in Canada



LSI Toronto

Located in Rosedale, one of the most beautiful residential neighbourhoods in Canada's largest city, LSI Toronto is well placed for exploring all that the area has to offer. The school occupies the 2nd and 3rd floors of a unique modern building with an open-air courtyard, common room, kitchen facilities and student computer room.

Leisure Programme

Social activities at LSI Toronto include picnics in summer, ice-skating in winter, and year-round trips to Niagara Falls, historic sites and beautiful natural parks.



General Courses

Standard 20 see p4
 • Elementary to Advanced
Intensive 30 see p4
 • Elementary to Advanced
Plus Courses see p4
 • Elementary to Advanced
English for Business
 see p10

• Intermediate to Advanced levels
 • 10 lessons per week. (5 business lessons + 5 professional conversation lessons)
 Starting dates: each Monday
 Beginners at Vancouver only

Cambridge Exam Courses

see p8
 • First Certificate (FCE)
 • Advanced (CAE)

Starting dates:
 FCE & CAE 12 weeks:
 Mar 29, Sep 20
 3 week Pre-Cambridge course available. Contact school for more details
 For examination dates, see p8-9

TOEFL iBT & TOEIC Preparation

see p8
 • Afternoon option on LSI Intensive 30 course
 • Intermediate to Advanced levels

International School Year

see p6
 • Elementary to Upper Intermediate levels
 Starting dates: Jan 4, Feb 1, Mar 1, Apr 6, May 3, Jun 7, Jul 5, Aug 3, Sep 7, Oct 4, Nov 1, Dec 6
 For examination dates, see p8-9

English for Teaching

see p9
 • Intermediate level and above
 • Minimum student number: 6 (for course), 10 (for exam)
 Contact school for dates

Club 50+

see p10
 • Elementary to intermediate levels
 Starting dates: Jan 4, Feb 1, Mar 1, Apr 6, May 3, Jun 7, Sep 7, Oct 4, Nov 1, Dec 6

Young Learners' Programme

see p35

Family Programme

see p35

Work Experience

see p11

University Pathway

see p7

Executive Courses

One-to-One
9 Day Compact Course
Mini Group Courses
 see p31-33

Public Holidays

No instruction on the following dates:
 Feb 15, Apr 2, 5, May 24, Jul 1, Aug 2, Sep 6, Oct 11

School is closed from Dec 24, 2010 to Jan 3, 2011.

LSI Course Prices in CD\$ Prices for tuition only

General Course	1 wk	2-3 wks	4-11 wks	12-15 wks	16-19 wks	20+ wks
Standard 20	295	285	275	255	245	235
Intensive 30 / Business	360	350	340	325	310	295
Club 50 + (wks)	570(2)					

Exam Preparation Courses	4 wks	8 wks	12 wks
TOEFL/TOEIC	1360	2720	3900
Cambridge Exam (30)			3900

English for Specific Purposes	English for Teaching (wks)
	1360(4)

Courses for Individuals	Plus Course Supplement: 5 lessons/10 lessons	Individual lesson
	380/760	76

ISY - International School Year	24 wks	30 wks	36 wks	48 wks
20 lessons per week	5400	6750	7740	10320
30 lessons per week	6360	7950	9180	12240

Examination Fees

FCE/CAE CD\$300

Additional Fees

Registration fee CD\$120
 Placement fee - work experience from CD\$1200 to CD\$2000, see p11
 Airport transfers (one way) CD\$100

Accommodation

Accommodation CD\$150
 placement fee

Homestay

Per person, per week:
 Single room B&B CD\$185
 HB CD\$215

Supplements per week:

Executive CD\$60
 Summer (Jun 27-Aug 29) CD\$20

Residential Accommodation

per person, per week:
 Global Village Backpackers Hostel (all year)
 Single room B&B CD\$505
 Dormitory B&B CD\$210
 Neil Wycik Residence (May - Aug)
 Single room B&B CD\$250

Campus Accommodation

Ryerson University, per person, per week (May-Aug)
 Single room B&B CD\$540
 A CD\$200 key/damage deposit will be charged and will be refunded upon return of key.
 CD\$50/month for internet use.

Hotel

2, 3 and 4 star hotel prices available on request.

Executive Course Prices in CD\$ See page 33





If you want to attend a friendly school, go to LSI. The staff and students are friendly and the range of nationalities is amazing!



Tirza S, Switzerland



Vancouver

English in Canada

The harbour city of Vancouver has long been regarded simply as one of the most spectacular cities in the world. Nestled between the snow-capped coastal mountains and the Pacific Ocean, Vancouver is a city of stunning natural beauty. It is also a modern city, with everything to appeal to the international visitor.

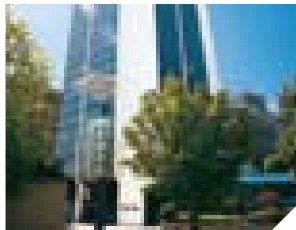


LSI Vancouver

Located on the 1st floor of a modern office tower in the centre of the downtown area, LSI Vancouver offers a computer room with internet access, multimedia self-study materials and kitchen facilities. The school is conveniently located for bus, Seabus and Skytrain transportation links and the city's main attractions.

Leisure Programme

As well as outings to the affordable restaurants and coffee shops for which Vancouver is famous, the social programme includes days at the beach, major sporting events with Vancouver's world-class professional teams, and weekend trips to Victoria, the Rocky Mountains and Whistler.



General Courses

Standard 20 see p4

- All levels

Intensive 30 see p4

- All levels

Plus Courses see p4

- All levels

English for Business

see p10

- Intermediate to Advanced levels

Starting dates for Elementary to Advanced levels: each Monday

Starting dates for students at Beginner level: Jan 4, Feb 1, Mar 1, Apr 6, May 3, Jun 7, Jul 5, Aug 3, Sep 7, Oct 4, Nov 1, Dec 6

Cambridge Exam Courses

see p8

- First Certificate (FCE)
- Advanced (CAE)

Starting dates:

CAE 9 weeks /

FCE 10 weeks: Jan 4

FCE & CAE 12 weeks:

Mar 29, Sep 20

3 week Pre-Cambridge course available. Contact school for more details

For examination dates, see p8-9

TOEFL iBT & TOEIC Preparation

see p8

- Afternoon option on LSI

Intensive 30 course

- Intermediate to Advanced levels

International School Year

see p6

- Beginner to Upper Intermediate levels

Starting dates: Jan 4, Feb 1,

Mar 1, Apr 6, May 3, Jun 7,

Jul 5, Aug 3, Sep 7, Oct 4,

Nov 1, Dec 6

For examination dates, see p8-9

English for Teaching

see p9

- Intermediate level and above

- Minimum student number: 6

Starting dates: Jul 5, Aug 3,

Sep 7

Club 50+

see p10

- Elementary to intermediate levels

Starting dates: Jan 4, Feb 1,

Mar 1, Apr 6, May 3, Jun 7,

Sep 7, Oct 4, Nov 1, Dec 6

Work Experience

see p11

University Pathway

see p7

Executive Courses One-to-One

9 Day Compact Course

Mini-Group Courses

see p31-33

Public Holidays

No instruction on the following dates:

Apr 2, 5, May 24, Jul 1, Aug 2, Sep 6, Oct 11, Nov 11

School is closed from Dec 24, 2010 to Jan 3, 2011.

LSI Course Prices in CD\$

Prices for tuition only

General Course	1 wk	2-3 wks	4-11 wks	12-15 wks	16-19 wks	20+ wks
Standard 20	295	285	275	255	245	235
Intensive 30 / Business	360	350	340	325	310	295
Club 50 + (wks)	570(2)					

Exam Preparation Courses

	4 wks	8 wks	9 wks	10 wks	12 wks
TOEFL/TOEIC	1360	2720			3900
Cambridge Exam (30)			3060	3400	3900

English for Specific Purposes

English for Teaching (wks)	1360(4)
----------------------------	---------

Courses for Individuals

Plus Course Supplement: 5 lessons/10 lessons	380/760
Individual lesson	76

ISY -

International School Year	24 wks	30 wks	36 wks	48 wks
20 lessons per week	5400	6750	7740	10320
30 lessons per week	6360	7950	9180	12240

Examination Fees

FCE/CAE	CD\$300
---------	---------

Additional Fees

Registration fee CD\$120

Placement fee - work

experience from CD\$1200

to CD\$2000, see p11

Airport transfers CD\$95

(one way)

Accommodation

Accommodation CD\$150

placement fee

Homestay

Per person, per week:

Single room B&B CD\$185

HB CD\$215

Supplements per week:

Executive CD\$60

Summer CD\$20

(Jun 27-Aug 29)

Campus Accommodation

University of British Columbia, per person, per week (May 16-Aug 22): Single room B&B CD\$465
A CD\$50 key/damage deposit will be charged and will be refunded upon return of key.

Student Residence

Prices available on request, subject to availability

Hotel

2, 3 and 4 star hotel prices available on request.



ETS AUTHORIZED TOEFL iBT CENTER

Member of the University of Technology P&S Association

Executive Course Prices in CD\$ See page 33

“ The course was fantastic!

Christoph Leiterer, Switzerland



Auckland

English in New Zealand

Auckland, the gateway to New Zealand, is a unique city of two harbours that have earned it the name “City of Sails”. With its multicultural mix of people, spectacular views and breathtaking scenery, Auckland is one of the world’s most pleasant and exciting cities.



LSI Auckland

LSI Auckland is based in the LSI Building where classrooms overlook the phoenix palms in Myers Park. There are excellent public transport links and amenities within a few minutes’ walk, as well as student rooms, libraries and computers for student use. Our student population boasts an average of 17 different nationalities.

Leisure Programme

As the financial and cultural heart of New Zealand, Auckland has much to offer the visitor – from attractive shopping amenities to exhibitions of Maori and Polynesian art. The social programme is second to none, with an unbeaten LSI football team and endless recreational possibilities, from skydiving to skiing, from wine-tasting to walks in the New Zealand bush.



General Courses

Standard 20 see p4

- All levels

Intensive 30 see p4

- All levels

Afternoon Course see p4

- Elementary to Advanced levels

Plus Courses see p4

- All levels

English for Business

see p10

- Intermediate to Advanced levels

Starting dates for Elementary to Advanced levels: each Monday.

Starting dates for students at

Beginner level: Jan 5, Feb 2, Mar 1, Apr 6, May 3, Jun 8, Jul 5, Aug 2, Sep 6, Oct 4, Nov 1, Dec 6

Cambridge Exam Courses

see p8

- Preliminary (PET)
- First Certificate (FCE)
- Advanced (CAE)
- Proficiency (CPE)
- Business (BEC Vantage)

Starting dates: PET 10 weeks: Mar 29, Sep 13.

FCE, CAE & CPE 8 weeks: Apr 26, Oct 18. CAE & CPE 9 weeks / FCE 10 weeks: Jan 5, FCE, CAE & CPE 10 weeks: Apr 12, Oct 4. FCE, CAE & CPE 12 weeks: Mar 29, Sep 20. BEC 10 weeks: Jan 11, Apr 6, Sep 27. For examination dates, see p8-9

IELTS Intensive Preparation

see p8

- 30 lessons per week
- Intermediate to Advanced levels
- 12 weeks

Starting dates: Jun 28

IELTS, TOEFL iBT & TOEIC Preparation

p8

- Afternoon option on LSI Intensive 30 course
- Intermediate to Advanced levels

International School Year see p6

- Beginner to Advanced levels

Starting dates: Jan 5, Feb 2, Mar 1, Apr 6, May 3, Jun 8, Jul 5, Aug 2, Sep 6, Oct 4, Nov 1, Dec 6. For examination dates, see p8-9

English for Pilots p9

English for Nursing p9

- Minimum student number: 6 (for course), 10 (for exam)

Starting dates: Jan 11, Mar 22, May 31, Aug 9, Oct 18, Nov 22

Club 50 +

- 5 activities per week
- Starting dates: Jan 5, Feb 2, Mar 1, Apr 6, May 3, Jun 8, Jul 5, Aug 2, Sep 6, Oct 4, Nov 1, Dec 6

University Pathway see p7

Executive Courses One-to-One Mini Group Courses see p31-33

Public Holidays

No instruction on the following dates: Jan 4, Feb 1, 6, Apr 2, 5, 25, Jun 7, Oct 25

School is closed from Dec 24, 2010 to Jan 4, 2011.

LSI Course Prices in NZ\$

Prices for tuition only

General Course	1 wk	2-3 wks	4-11 wks	12-15 wks	16-19 wks	20+ wks
Standard 20	255	255	255	255	255	255
Intensive 30 / Business	370	370	370	370	370	370
Afternoon Course	130	130	130	130	130	130
Club 50 + (wks)						510(2)

Exam Preparation Courses

	4 wks	8 wks	9 wks	10 wks	12 wks
TOEFL/TOEIC/IELTS	1480	2960			4440
Cambridge Exam (30)		2960	3330	3700	4440

English for Specific Purposes

English for Nursing (wks)		6600(24)	9540(36)
English for Pilots (wks + plus course)		4220	5240
English for Teaching (wks)		(4+ plus 10)	(8+ plus 5) 1480(4)

Courses for Individuals

Plus Course Supplement: 5 lessons/10 lessons	400/800
Individual lesson	80

ISY – International School Year	24 wks	30 wks	36 wks	48 wks
30 lessons per week	6600	8250	9540	12720

Executive Course Prices in NZ\$

See page 33

Examination Fees

PET/BEC NZ\$290/300

FCE/CAE/CPE NZ\$300

TOEIC/IELTS NZ\$320/345

Registration fee NZ\$120

Late booking fee (Cambridge Exam) NZ\$70

Text books for Cambridge Exam (2) NZ\$150

Course materials per week up to max. of 20 wks (not Cambridge Exam students) NZ\$20

Meet and greet (one way) NZ\$95

Accommodation

Accommodation placement fee NZ\$200

Homestay Per person, per week:

Single room B&B NZ\$175

HB NZ\$220

Supplements per week:

Executive NZ\$70

Student Residence

(all year, minimum stay 2 weeks, minimum age 18 years):

City Lodge (no meals) per person per week.

single room, NZ\$270

private bathroom

Hotel

2, 3 and 4 star hotel prices available on request.





Christchurch

English in New Zealand

Internationally famed as the “Garden City”, Christchurch is renowned for its natural beauty and wealth of cultural and entertainment possibilities.



LSI Christchurch

LSI Christchurch is in the centre of “Garden City”, perfectly located for experiencing the cosmopolitan life of New Zealand’s second largest city. The facilities are excellent, and include a comfortable student common room, computers with free internet access, private study and self-study materials.

Leisure Programme

Often described as the most English city outside of England, Christchurch is filled with beautiful architecture, parks and leafy suburbs. The natural beauty of the area is famous – to the East is the sea, to the West lie forests, lakes and the Southern Alps, and to the North are rolling hills and miles of empty beaches. Accordingly the social activities are varied, and include fishing, skiing and learning about Maori culture.



General Courses

Standard 20 see p4

- All levels

Intensive 30 see p4

- All levels

Afternoon Course see p4

- Elementary to Advanced levels

Plus Courses see p4

- All levels

Starting dates for Elementary to Advanced levels: each Monday

Starting dates for students at Beginner level: Jan 5, Feb 1, Mar 1, Apr 6, May 3, Jun 8, Jul 5, Aug 2, Sep 6, Oct 4, Nov 1, Dec 6

Cambridge Exam Courses

see p8

- First Certificate (FCE)

Starting dates:

FCE 10 weeks: Jan 5

FCE 12 weeks: Mar 29, Sep 20

For examination dates, see p8-9

IELTS & TOEIC Preparation Courses

see p8

- Intermediate to Advanced

Starting dates: Every Monday

International School Year

see p6

- Beginner to Advanced

Starting dates: Jan 5, Feb 1, Mar 1, Apr 6, May 3, Jun 8, Jul 5, Aug 2, Sep 6, Oct 4, Nov 1, Dec 6

English for Nursing

see p9

English for Teaching

see p9

- Intermediate level and above

- Minimum student number: 6 (for course), 10 (for exam)

Starting dates: Jan 11, Mar 22, Jun 21, Sep 27

Club 50 +

- Elementary to intermediate levels

• 5 activities per week
Starting dates: Jan 5, Feb 1, Mar 1, Apr 6, May 3, Jun 8, Jul 5, Aug 2, Sep 6, Oct 4, Nov 1, Dec 6

University Pathway

see p7

Executive Courses

One-to-One

see p31-33

Public Holidays

No instruction on the following dates:
Jan 4, Feb 6, Apr 2, 5, 25, Jun 7, Oct 25, Nov 12

School is closed from Dec 24, 2010 to Jan 4, 2011.

LSI Course Prices in NZ\$

Prices for tuition only

General Course	1 wk	2-3 wks	4-11 wks	12-15 wks	16-19 wks	20+ wks
Prices per week						
Standard 20	255	255	255	255	255	255
Intensive 30	370	370	370	370	370	370
Afternoon Course	130	130	130	130	130	130
Club 50 + (wks)						510(2)

Exam Preparation Courses

	10 wks	12 wks
TOEIC/IELTS	3700	
Cambridge Exam (30)	3700	4440

English for Specific Purposes

English for Nursing (wks)	6600(24)	9540(36)
English for Teaching (wks)		1480(4)

Courses for Individuals

Plus Course Supplement: 5 lessons/10 lessons	400/800
Individual lesson	80

ISY – International School Year	24 wks	30 wks	36 wks	48 wks
30 lessons per week	6600	8250	9540	12720

Executive Course Prices in NZ\$

See page 33

Examination Fees

FCE	NZ\$300
TOEIC	NZ\$320
IELTS	NZ\$345

Additional Fees

Registration fee	NZ\$120
Late booking fee (Cambridge Exam)	NZ\$70
Text books for Cambridge Exam (2)	NZ\$150
Course materials per week up to max. of 20 wks (not Cambridge Exam students)	NZ\$20
Meet and greet (one way)	NZ\$95

Accommodation

Accommodation placement fee	NZ\$200
-----------------------------	---------

Homestay

Per person, per week:	
Single room	B&B NZ\$175
	HB NZ\$220

Supplements

Executive	NZ\$70
-----------	--------

Student Residence /Self-catering Apartments/Flatshare /Studio Units/Hostel: prices on request, all year round, subject to availability, over 18's only

Hotel

2, 3 and 4 star hotel prices available on request.



Member of the British Council

“ I would like to thank my teachers and all the staff. I had a really great time for six months here. I think my English improved a lot. I will never forget all the things I did here.



Carol Timperman, Belgium



Brisbane

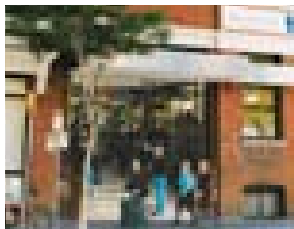
English in Australia

With its breathtaking landscapes, fantastic food, relaxed way of life and rich cultural diversity, Australia is one of the most exciting countries in the world. Brisbane, the capital of Queensland, is located on the Brisbane River and has a wonderful climate all year round.



LSI Brisbane

LSI Brisbane is located in a heritage building in the heart of this sophisticated yet relaxed subtropical city, close to shops, restaurants and public transport links. The school is fully air-conditioned, and there are kitchen facilities on both floors, as well as a computer room with free internet access and a library for quiet study.

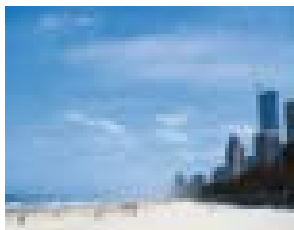
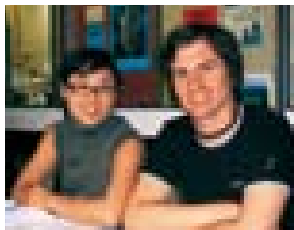


Leisure Programme

The Queen Street Mall, the Botanical Gardens and the Riverside Centre with its outdoor cafes overlooking the Brisbane River are only a short stroll away and outstanding attractions such as beaches and rainforests can be reached in less than an hour.



The social programme encompasses all that is best about Australia's 'Sunshine State', including sightseeing, sports and weekend excursions.



General Courses

- Standard 20** see p4
 - 20 lessons per week (1-12 weeks) • All levels
- Intensive 24***
 - 24 lessons per week (1-50 weeks)
 - 2 days (6 lessons), 3 days (4 lessons)
- All levels
- Intensive 30*** see p4
 - All levels
- Plus Courses** see p4
 - All levels

English for Business

- see p10
 - Intermediate to Advanced levels
- Starting dates for Elementary to Advanced levels: each Monday.
- Starting dates for students at Beginner level: Jan 4, Feb 1, Mar 1, Apr 6, May 4, Jun 7, Jul 5, Aug 2, Sep 6, Oct 4, Nov 1, Dec 6

Cambridge Exam Courses*

- see p8
 - Preliminary (PET)
 - First Certificate (FCE)
 - Advanced (CAE)
 - Business (BEC Vantage)
 - 24 lessons per week option only available for FCE and CAE
- Starting dates: CAE 9 weeks / BEC & FCE 10 weeks: Jan 4. FCE & CAE 12 weeks: Mar 22, Sep 13. PET 10 weeks: Mar 22. BEC 12 weeks: Sep 13
- For examination dates, see p8-9

IELTS Intensive Preparation*

- see p8
 - 30 lessons per week
 - Intermediate level
 - 12 weeks
- Starting dates: Jan 4, Jul 5

TOEIC, TOEFL iBT & IELTS Preparation

- see p8
 - Afternoon option on LSI Intensive 30 course
 - Pre-Intermediate to Advanced levels
- International School Year*** see p6
- Beginner to Intermediate levels
- Starting dates: Jan 4, Feb 1, Mar 1, Apr 6, May 4, Jun 7, Jul 5, Aug 2, Sep 6, Oct 4, Nov 1, Dec 6. For examination dates, see p8-9

English for Teaching

- see p9
 - Intermediate level and above
 - Minimum student number: 8
- Contact school for dates

Club 50 +

- see p10
 - Elementary to intermediate levels
 - 3 activities per week
- Starting dates: Mar 15, May 10, Jun 21, Sep 6

Work Experience

- see p11

Executive Courses

- see p31-33

Public Holidays

No instruction on the following dates: Jan 26, Apr 2, 5, 26, May 3, Jun 14, Aug 11

School is closed from Dec 24, 2010 to Jan 3, 2011.

*These courses are suitable for student visa holders.

LSI Course Prices in AU\$

Prices for tuition only

General Course	1 wk	2-3 wks	4-11 wks	12-15 wks	16-19 wks	20+ wks
Standard 20	240	240	235	225		
Intensive 24	285	285	280	270	260	250
Intensive 30 / Business	335	335	330	325	310	295
Club 50 + (wks)						480(2)

Exam Preparation Courses	4 wks	8 wks	9 wks	10 wks	12 wks
TOEFL/TOEIC/IELTS	1320	2640			3900
Cambridge Exam (24)			2520	2800	3240
Cambridge Exam (30)			2970	3300	3900

English for Specific Purposes

English for Teaching (wks)	1320(4)
----------------------------	---------

Courses for Individuals

Plus Course Supplement: 5 lessons/10 lessons	400/800
Individual lesson	80

ISY - International School Year	24 wks	30 wks	36 wks
24 lessons per week	5640	7050	8100
30 lessons per week	6720	8400	9900

Examination Fees

PET	AUS\$275
FCE	AUS\$395
CAE	AUS\$400
BEC Vantage	AUS\$405

Additional Fees

Registration fee	AUS\$180
Late booking fee (Cambridge Exam)	AUS\$80
Course materials: Cambridge Exam	AUS\$180
Other courses per week	AUS\$15
Overseas student health cover per month (must cover length of student visa)	AUS\$33
Airport transfers* (one way)	AUS\$100

* Compulsory for U18

Accommodation

Accommodation placement fee	AUS\$220
-----------------------------	----------

Homestay

Per person, per week:

Single room	B&B	AUS\$160
Extra night	B&B	AUS\$24
	HB	AUS\$25

Supplements per week:

Christmas	AUS\$25
U18 Full Board	AUS\$75
Special Diets	AUS\$25
Executive	AUS\$25

Student Residences

per person, per week:

Single room**	AUS\$260-700
---------------	--------------

** A range of meal options are available. Please contact LSI Brisbane for details

Hotel

2, 3 and 4 star hotel prices available on request.





Sliema

English in Malta
English Language Academy



LSI Sliema

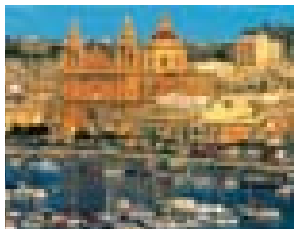
The LSI-affiliated school English Language Academy is situated about 3 minutes walk from the promenade in Sliema and is within easy reach of restaurants, cafes and shops. It is one of the founder members of the Federation of English Language Teaching Of Malta (FELTOM). Our courses are run throughout the year, for adults, teenagers and even young children. Groups are small and attend to six levels of proficiency. Teacher training courses are available for experienced teachers, aimed specifically at primary/secondary school teachers of English as a second language. We are also licensed for the EU Socrates Programme for Educational Courses. The school is air-conditioned, with reference library and free internet services.

Leisure Programme

Besides our LSI Social/Leisure programme we can also organise excursions on Malta and her sister island Gozo.

ETS AUTHORIZED
TOEFL iBT CENTER

Member of the
International English Language Testing Association



General Courses

Standard 20 see p4

- 1 lesson: 45 minutes
- 6/10* students max. per class
- All levels

Intensive 30 see p4

- 1 lesson: 45 minutes
- 6/10* students max. per class
- All levels

City & Guilds test

Students who would like an internationally recognised certificate after their general English course can take the C&G test (fee € 50). This test needs to be booked at least three weeks in advance.

Combi Courses

- 30 lessons per week (20 Everyday English + 10 Business/Exam Course)

- 6/10* students max. per Everyday English class, 6 students max. per Business/Exam Course class

- Lower intermediate to Advanced levels

Business English

- 1 lesson: 45 minutes
- 6 students max.

- Lower Intermediate to Advanced levels

English for Specific Purposes (ESP)

- 2/4 students max. per class
- All levels

Starting dates: every day Mon-Fri

* Courses with 6 participants available. Nov-Mar; Courses with 10 participants

available Apr-Oct. Teenager group courses, average ten maximum twelve in July and August.

TOEFL iBT & IELTS

Preparation see p8

- Intermediate level
- Individual/Group lessons*

Starting dates: every day Mon-Fri

* Examination Group classes (6 students max.)

TEFL Preparation

- 60 lessons
- 4 week course
- 16 participants max.

Starting dates: please contact LSI Sliema for details

Cambridge Exam

Courses see p8

- Preliminary (PET)
- Business (BEC Vantage)

- First Certificate (FCE)
- Advanced (CAE)
- Proficiency (CPE)
- Individual/Group lessons*

Starting dates: every day Mon-Fri.

* Examination Group classes (6 students max.). Lesson time reduced by 50% if only one student in the class

Executive Courses One-to-One

see p31-33

Public Holidays

No instruction on the following dates: Jan 1, Feb 10, Mar 19, 31, Apr 2, Jun 7, 29, Sep 8, 21, Dec 8, 13, 25.

Lessons missed on those days will be made up for during the week.

LSI Course Prices in € Prices for tuition only

General Course	1-2 wks	3-4 wks	5-8 wks	9-11 wks	12-15 wks
Standard 20	135	128.25	121.50	114.75	101.25
Intensive 30	175	166.25	157.50	148.75	131.25

For prices of other weeks please contact LSI Sliema

Combi Courses	1 wk	200
Business English: 20 lessons/30 lessons	180/245	
ESP (class of 2): 20 lessons/30 lessons	200/280	
ESP (class of 4): 20 lessons/30 lessons	150/210	

Exam preparation: TOEFL, IELTS & Cambridge Exams

15 lessons per week (individuals)	300
20 lessons per week (groups/individuals)	180/380
30 lessons per week (groups/individuals)	245/540

Executive Course Prices in € See page 33

Additional Fees

Registration fee	€15
Course materials	€12
Airport transfers (return)	€36

Accommodation

Homestay	per person, per night for twin or triple room
Jan 1 - Jun 30 & Oct 1 - Dec 31:	
FB	€22
HB	€19
Single room supplement	€5.50
Jul 1 - Sep 30:	
FB	€26
HB	€22
Single room supplement	€7

School Residences

Quad/Triple room
Double/Single room
Sharing room
Accommodation prices will be given on request. Double, triple, or quadruple rooms may only be booked if 2, 3 or 4 people sharing. Sharing room means that clients could be sharing with up to three other people.

Hotel

2, 3 and 4 star hotel prices available on request.



Paris

French in France
Private Institute of Higher Education
Academy of Paris

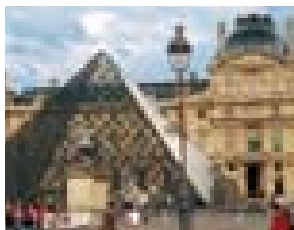
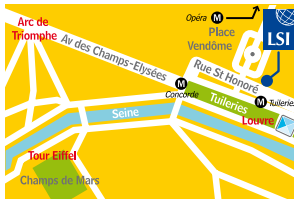
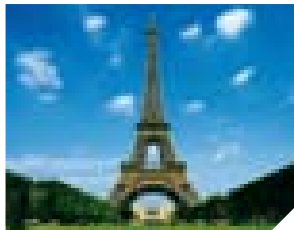


LSI Paris

Situated in a listed, 18th century building at the historical heart of the city, LSI Paris is right by the Louvre and close to the Place Vendome, the Opera and the sophisticated yet bohemian Saint-Honore district. The school is easily accessible by Metro, with Tuileries, Concorde, Opera and Pyramides stations all close by. Computer facilities, a common room and daily newspapers and magazines are provided for student use.

Leisure Programme

The social programme takes advantage of all the myriad attractions that Paris has to offer. Excursions to nearby Versailles and further afield to other parts of France are also possible.



General Courses

Standard 20 see p4

- 12 students max. (average 9)
- All levels

Intensive 30 see p4

- 12 students max. (average 9)
- All levels

Afternoon Course see p4

- 12 students max. per class
- All levels
- Conversational French/Business French/Exam Preparation

Plus Courses see p4

- All levels
- Starting dates for Elementary to Advanced levels: each Monday

Starting dates for students at Beginner level: Jan 4, Feb 1, Mar 1, Apr 6, May 3, Jun 7, Jul 5, Aug 2, Sep 6, Oct 4, Nov 2, Dec 6

Examination Courses:

Diplôme d'Etudes en Langue Française (D.E.L.F.)

- Intensive 30 with DELF preparation in afternoon
 - 8 weeks
 - Levels A2/B1/B2
- Please contact LSI Paris for starting dates

Test D'Evaluation de Français (TEF)/Test d'Evaluation de Français adapté au Québec (TEFAQ)

- Afternoon option on LSI Intensive 30
- Minimum of 2 weeks
- Intermediate level or above

Starting dates: each Monday
For examination dates, see p8-9

Diplômes de la Chambre de Commerce et d'industrie de Paris (CCIP):

Français professionnel - 2 levels (A2 or B1)

Français professionnel médical (B2)

Français professionnel secrétariat (B1)

Français professionnel affaires (B2)

Français professionnel du tourisme et hôtellerie (B1 or B2)

- Afternoon option on LSI Intensive 30
- 8 weeks
- Levels required displayed next to course

Please contact LSI Paris for starting date

International School Year see p6

- Beginner to Upper Intermediate levels

Starting dates: Jan 4, Feb 1, Mar 1, Apr 6, May 3, Jun 7, Jul 5, Aug 2, Sep 6, Oct 4, Nov 2, Dec 6

Club 50+ see p10

- Elementary to intermediate levels
- Starting dates: Mar 1, Apr 6, May 3, Jun 7, Sep 6, Oct 4, Nov 2, Dec 6

Executive Courses One-to-One

9 Day Compact course see p31-33

Public Holidays

No instruction on the following dates: Apr 5, May 13, 24, Jul 14, Nov 1, 11

School is closed from Dec 24, 2010 to Jan 3, 2011.

LSI Course Prices in € Prices for tuition only

Course	1 wk	2-3 wks	4-11 wks	12-15 wks	16-19 wks	20+ wks
Standard 20	290	265	240	225	215	205
Intensive 30	400	345	320	300	285	275
TEF/TEFAQ		345	320	300	285	275
Afternoon Course	150	135	120	115	110	105
Club 50 + (wks)						530(2)

Exam Preparation Courses

DELF (weeks)	2560(8)
CCIP (weeks)	2560(8)

Courses for Individuals

Plus Course Supplement: 5 lessons/10 lessons	360/720
Individual lesson	72

ISY - International School Year	24 wks	30 wks	36 wks	48 wks
20 lessons per week	4680	5850	6660	8880
30 lessons per week	6000	7500	8820	11760

Examination Fees

DELF A2/B1	€185
DELF B2	€265
TEF Compulsory	€115
TEF Optional	€105
e-TEF	€115
e-TEFAQ	€140

Additional Fees

Registration fee	€65
Course materials per wk (up to max. of 20 weeks)	€9
Airport transfers (one way): Roissy CDG/Orly	€85
Beauvais - prices on request	

Accommodation

Accommodation placement fee	€60
Homestay	
per person, per week:	
Single room B&B	€205
Single room HB	€270
Single room HB in the suburbs of Paris (Zones 2/3)	€235

Student Residences

prices on request, subject to availability

Hotel

2, 3 and 4 star hotel prices available on request.

Executive Course Prices in € See page 33





I like the school. The course is very intensive. I am making progress every day. The lessons are 'cool'. Today I can say that German is a beautiful and interesting language.



Anna Popova, student, Russia



Frankfurt

German in Germany

The city of Frankfurt has the most impressive skyline in Germany, the largest stock market and a remarkable number of museums and other cultural diversions and attractions. Experience the contrast between hi-tech and traditional styles in this fascinating city.



LSI Frankfurt

LSI Frankfurt is located in the pedestrian zone known as the Zeil, in the very heart of the city. It is conveniently situated for the famous shops and department stores, and for attractions such as the Opera, the Paulskirche (the seat of the first German Parliament), the Town Hall with its half-timbered buildings, and the home of Germany's most famous poet and author, Johann Wolfgang von Goethe.



Leisure Programme

Frankfurt, the financial centre of Europe, is a historically rich, multicultural and cosmopolitan city with endless cultural and recreational possibilities. The leisure activities are as diverse as the city itself. Day and weekend trips to places such as the Rhine Valley and Heidelberg Castle are very popular.



General Courses

Standard 20 see p4

- 8 students max. (average 4)
- All levels

Intensive 30 see p4

- 8 students max. (average 4)
- All levels

Plus Courses see p4

- All levels
- Starting dates for Elementary to Advanced levels: each Monday from Jun 14 until Sep 24
- Starting dates for students at Beginner level: Jun 14, Jul 5, Aug 2, Sep 6
- Courses end Sep 24.
- Other course dates available on request.

Zertifikat Deutsch (ZD)

- 30 lessons per week
- 8 students max. (average 4)

Please contact LSI Frankfurt for starting dates

For examination dates, see p8-9

Executive Courses One-to-One

9 Day Compact course see p31-33

Public Holidays

No instruction on the following dates:
Apr 2, 5, May 1, 13, 24, Jun 3, Oct 3

School is closed from Dec 24, 2010 to Jan 2, 2011.

LSI Course Prices in € Prices for tuition only

General Course	1 wk	2-3 wks	4-11 wks	12-15 wks
Standard 20	240	230	215	210
Intensive 30	305	290	270	260

Exam Preparation Courses

Zertifikat Deutsch (ZD)	8 wks	12 wks
	2160	3120

Courses for Individuals

Plus Course Supplement: 5 lessons/10 lessons	230/460
Individual lesson	46

Executive Course Prices in € See page 33

Examination Fees

Zertifikat Deutsch (ZD) €120

Additional Fees

Registration fee	€65
Airport transfers (one way)	€75

Accommodation

Accommodation placement fee €50

Homestay

per person, per week:	
Single room B&B	€170
HB	€240

Student Residences prices on request, subject to availability

Hotel

2, 3 and 4 star hotel prices available on request.



“ Besides competent and enriching lessons, LSI Zürich organises a great leisure program. The teachers are really cool and put across how fresh German can be!



Jan Bajer, student, Czech Republic



Zurich

German in Switzerland

Zürich is ideally located at the heart of Europe. The city's picturesque historic centre is situated on the banks of the river Limmat. Over 500 bars and nightclubs as well as outdoor cafés provide ideal meeting places for visitors and residents. Zürich offers a wide choice of museums, theatres, and a highly acclaimed opera house. Sport enthusiasts don't miss out on anything either.

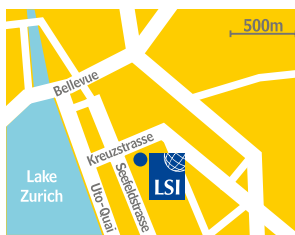


LSI Zürich

Situated in the popular Seefeld district, just 5 minutes from the lake and close to the city centre, LSI Zürich is a perfect departure point for exploring this most varied and refined of cities. The school has 9 classrooms, a modern internet café and a student lounge.

Leisure Programme

Our varied activities include scenic boat trips, school BBQs, Cheese Fondue nights, opera visits, excursions to other Swiss cities and the Alps, as well as sports activities and weekend trips to the surrounding countries of Austria, France, Germany and Italy. LSI Zürich's leisure programme aims to satisfy the interests of all our international students.



General Courses

Standard 20 see p4

- 1 lesson: 45 minutes
- 12 students max. (average 8)
- All levels

Intensive 30 see p4

- 1 lesson: 45 minutes
- 12 students max. (average 8)
- All levels

Afternoon Course see p4

- 1 lesson: 45 minutes
- 12 students max. (average 8)
- Intermediate to Advanced levels
- Conversational German/Business German/Exam Preparation

Plus Courses see p4

- All levels
- Starting dates for Elementary to Advanced levels: each Monday

Starting dates for students at Beginner level: Jan 4, Feb 1, Mar 1, Apr 6, May 3, Jun 7, Jul 5, Aug 2, Sep 6, Oct 4, Nov 1, Dec 6

International School Year see p6

- Beginner to Intermediate levels
- Starting dates: Jan 4, Feb 1, Mar 1, Apr 6, May 3, Jun 7, Jul 5, Aug 2, Sep 6, Oct 4, Nov 1, Dec 6

Zertifikat Deutsch (ZD)

- 30 lessons per week
- 12 students max. (average 8)

Goethe Zertifikat B2 (GZ)

- 30 lessons per week (average 8)
- 12 students max. (average 8)

Starting dates: Apr 19, Jun 14, Oct 25
For examination dates, see p8-9

Executive Courses One-to-One 9 Day Compact Course see p31-33

Public Holidays

No instruction on the following dates:
Apr 2, 5, May 1, 13, 24, Aug 1

School is closed from Dec 24, 2010 to Jan 2, 2011.

LSI Course Prices in CHF Prices for tuition only

General Course	1 wk	2-3 wks	4-11 wks	12-15 wks	16-19 wks	20+ wks
Standard 20	420	380	360	340	320	305
Intensive 30	545	515	495	480	455	435
Afternoon Course	210	190	180	170	160	155

Exam Preparation Courses

Zertifikat Deutsch (weeks)	5760(12)
Goethe Zertifikat B2 (weeks)	5760(12)

Courses for Individuals

Plus Course Supplement: 5 lessons/10 lessons	445/890
Individual lesson	89

ISY –

International School Year	24 wks	30 wks	36 wks	48 wks
20 lessons per week	6240	7800	9180	12000
30 lessons per week	9120	11400	13500	17520

Executive Course Prices in CHF See page 33

Examination Fees

Zertifikat Deutsch (ZD)	CHF270
Goethe Zertifikat B2	CHF310

Additional Fees

Registration fee	CHF100
Course materials	CHF14 per wk (up to max. of 20 wks)
Airport transfers (one way)	CHF150

Accommodation

Accommodation placement fee	CHF100
-----------------------------	--------

Homestay

Per person, per week:	
Single room	B&B CHF250
	HB CHF370

Student Residences

prices on request, subject to availability

Hotel

2, 3 and 4 star hotel prices available on request.



LSI Executive Courses



One-to-One

- 20, 30, 40, or 50 individual lessons per week
- Beginner to Advanced levels
- 1 lesson: 45 minutes (in the USA 50 minutes)
- Courses begin: every Monday

Individual tuition is the fastest way to learn a language. Whether you need general or specialised language, each course is designed for your needs and adapted to your rate of progress. It is the perfect option if you have specific targets or limited time. It is particularly convenient for professionals and executives preparing for a trip abroad, or negotiations and presentations in a foreign language. Our reputation for adaptability and flexibility means that your trainers respond to any further requirements you may have.

9 Day Compact Course

- 82 or 92 individual lessons
- 9 consecutive days
- Courses begin: every Saturday

For people with special aims which must be met in a short space of time. Requiring just one week away from the office, this course is ideal for busy professionals and executives who need to prepare for presentations and meetings abroad. The course includes lunch with your teacher, giving you the opportunity to work on your social language - also vital in a business situation.

LSI has over 40 years' experience in professional training and specialised language courses. We offer a wide range of courses. We will design a programme to meet your needs, whatever they are. Our language trainers use the latest teaching methods and are skilled at assessing your needs. They will establish with you a detailed course plan to help you achieve your objectives.

Mini Group

- 20, 30 or 40 lessons per week
- Participants: maximum 5
- Minimum age: 21 years
- Intermediate to Advanced levels
- Course length: 1-4 weeks
- 1 lesson: 45 minutes (in the USA 50 minutes)
- Courses begin: every Monday

This course combines general grammar and skills development with an in-depth focus on the language of business. The small, intensive group provides the ideal opportunity to practise negotiation, presentation and meeting skills in a realistic situation.

Intercultural awareness is important in global business and communication. The international mix of our courses and experience of our teachers provides the perfect forum in which to gain this valuable knowledge.

Mini Group Plus One-to-One

Designed to complement the Mini Group, Plus courses are individual lessons flexibly arranged when you need extra help on a specific area or want to increase your rate of progress.

Sample course plans:

- 40 Mini Group lessons + 5 One-to-One lessons per week
- 30 Mini Group lessons + 10 One-to-One lessons per week
- 20 Mini Group lessons + 20 One-to-One lessons per week
- 2 weeks Mini Group (40 lessons per week) + 1 week One-to-One (40 lessons per week)



We had a lot of good in-depth discussions in class and I thoroughly enjoyed my stay.

Anita Rasmussen, Attorney, Denmark



The goals set with my LSI teacher have been entirely achieved: a tailor-made individual course with emphasis on speaking and pronunciation and useful business vocabulary and idioms.

Olivier Kaeser, UBS Business Banking, Swiss-French



Executive Centres

LSI Executive Centres - Besides the LSI executive centre in London Central, other LSI language centres offer the following selection of executive courses:



London Central

Located in the very heart of London, the Centre is situated on the top floor of our central London school.

A dedicated area is provided for executive clients to study and socialise in a calm and quiet environment. The centre is equipped with computers for client use, and complimentary tea, coffee and daily newspapers are provided. On arrival all clients receive a portfolio folder containing key business vocabulary and information on local attractions, amenities and leisure activities.

An exciting programme of social activities is organised especially for our executive clients, including theatre trips, restaurant evenings, guided walks, museum visits, and a weekly cheese and wine party. These activities help our clients to make the most of their time in London, and provide an excellent opportunity to practise English and meet like-minded professionals.

The Executive Centre is open on public holidays.

London Central – England see p14

- One-to-One
- 9 Day Compact Course
- Mini Group 20/30/40
- Mini Group Plus

London Hampstead – England see p15

- One-to-One

Brighton – England see p16

- One-to-One
- 9 Day Compact Course

Cambridge – England see p17

- One-to-One
- 9 Day Compact Course

San Diego – USA see p18

- One-to-One
- 9 Day Compact Course
- Mini Group 20
- Mini Group Plus

San Francisco/Berkeley – USA see p19

- One-to-One
- 9 Day Compact Course
- Mini Group 20/30
- Mini Group Plus

New York – USA see p20

- One-to-One
- Mini Group 20
- Mini Group Plus

Boston – USA see p21

- One-to-One
- 9 Day Compact Course
- Mini Group 20 (seasonal)
- Mini Group Plus

Toronto – Canada see p22

- One-to-One
- 9 Day Compact Course
- Mini Group 30
- Mini Group Plus

Vancouver – Canada see p23

- One-to-One
- 9 Day Compact Course
- Mini Group 30
- Mini Group Plus

Auckland – New Zealand see p24

- One-to-One
- Mini Group 30
- Mini Group Plus

Christchurch – New Zealand see p25

- One-to-One

Brisbane – Australia see p26

- One-to-One

Sliema – Malta see p27

- One-to-One

Paris – France see p28

- One-to-One
- 9 Day Compact Course

Frankfurt – Germany see p29

- One-to-One
- 9 Day Compact Course

Zürich – Switzerland see p30

- One-to-One
- 9 Day Compact Course

SOME OF OUR CLIENTS

FINANCIAL

American Express
Credit Suisse
Deutsche Bank
Goldman Sachs
JP Morgan Chase
Lloyds TSB
Merrill Lynch

AUTOMOTIVE – ENGINEERING

Daimler Chrysler
Mercedes Benz
Mitsubishi
Toyota

PHARMS AND HEALTHCARE

Aventis
Pfizer
Johnson & Johnson
Bayer

CONSULTANCY

Cap Gemini
Ernst & Young
KPMG

TECHNOLOGY

Bosch
Casio
Dell
Ericsson
Hewlett-Packard
Logica
Samsung
Siemens
SMEG

TRANSPORT

Deutsche Bahn
Lufthansa Cargo

OIL

Shell

FOODS

Cadbury
Schweppes
Cadbury Trebor
Bassett
Coca Cola
Danone
Heineken
Nestlé
Unilever

TELECOMMS

British Telecom
Cable and Wireless
Nortel Networks
Orange
Communications

MEDIA

BBC TV
EMI Records
Reuters

RETAIL

H&M -
Hennes & Mauritz
Gucci
Kookaï

ENTERTAINMENT

The Walt Disney
Company



The combination of the Mini Group and One-to-One course to improve my English was very useful. We also had a very good atmosphere and the teachers were very flexible.



Jens-Michael Gebhardt, Engineer BOSCH, Germany



LSI Executive Courses (prices for tuition only)

One-to-One Courses	5 lessons per week	10 lessons per week	20 lessons per week	30 lessons per week	40 lessons per week	50 lessons per week
London Central, London Hampstead*, Brighton, Cambridge	£225	£450	£900	£1350	£1800	£2250
SF/Berkeley, San Diego, Boston	US\$380	US\$760	US\$1520	US\$2280	US\$3040	US\$3800
New York	US\$405	US\$810	US\$1620	US\$2430	US\$3240	
Toronto, Vancouver	CD\$380	CD\$760	CD\$1520	CD\$2280	CD\$3040	CD\$3800
Brisbane	AU\$400	AU\$800	AU\$1600	AU\$2400		
Auckland, Christchurch	NZ\$400	NZ\$800	NZ\$1600	NZ\$2400		
Sliema (General/Specialised)			€340/380	€480/540		
Paris	€360	€720	€1440	€2160	€2880	€3600
Frankfurt	€230	€460	€920	€1380	€1840	€2300
Zürich	CHF445	CHF890	CHF1780	CHF2670	CHF3560	CHF4450

Mini Group (Course Prices per week)	lessons per week	1 wk	2 wks	3 wks	4+ wks
London Central	20	£480	£460	£440	£420
	30	£650	£630	£610	£590
	40	£820	£800	£780	£760
SF/Berkeley**	30	US\$1235	US\$1095	US\$1050	US\$1030
Boston***, SF/Berkeley**, San Diego**	20	US\$925	US\$825	US\$790	US\$770
New York **	20	US\$1080	US\$960	US\$920	US\$900
Toronto, Vancouver	30	CD\$1130	CD\$990	CD\$945	CD\$925
Auckland	30	NZ\$1050	NZ\$970	NZ\$940	NZ\$925

9 Day Compact Course	82 lessons	92 lessons
London Central, Brighton, Cambridge	£3690	£4140
SF/Berkeley, San Diego, Boston	US\$6230	US\$6990
Toronto, Vancouver	CD\$6230	CD\$6990
Paris	€5900	€6620
Frankfurt	€3690	€4045
Zürich	CHF7295	CHF8185

* 40/50 lessons not available.

** 1st Monday of each month (recommended), or each Monday. In cases where a public holiday falls on a Monday, the course will start on the Tuesday.

*** Boston: Jun 7 – Sep 27

Registration Fees

London Central, London Hampstead, Brighton, Cambridge	£60	SF/Berkeley, San Diego & Boston	B&B	US\$185
SF/Berkeley, San Diego, Boston, New York	US\$120	Executive suppl.	HB	US\$250
Toronto, Vancouver	CD\$120	New York (Manhattan)	B&B	US\$485
Brisbane	AU\$180	(outside Manhattan)	B&B	US\$260
Auckland, Christchurch	NZ\$120	Executive suppl. (in Manhattan)	HB	US\$325
Sliema	€15	USA summer suppl. Jun 27 - Aug 29		US\$180
Paris	€65			US\$30
Frankfurt	€65			
Zürich	CHF100			

Accommodation Placement Fees

Paris	€60	Toronto & Vancouver	B&B	CD\$185
Frankfurt	€50	Executive suppl.	HB	CD\$215
Zürich	CHF100	Summer suppl. Jun 27 - Aug 29		CD\$60
Brisbane	AU\$220	Brisbane	B&B	AU\$160
Auckland, Christchurch	NZ\$200	Executive suppl.	HB	AU\$210
Toronto, Vancouver	CD\$150	Auckland & Christchurch	B&B	NZ\$175
SF/Berkeley, San Diego, Boston, New York	US\$75	Executive suppl.	HB	NZ\$220
		Paris	B&B	€205
			HB	€270
		Frankfurt	B&B	€170
			HB	€240
		Zürich	B&B	CHF250
			HB	CHF370
		Sliema	HB	€24.50
		(prices per night)	FB	€27.50
		Summer suppl. Jul 1- Sep 30	HB	€4.50
			FB	€5.50

Homestay

Single room per person (all prices are per week unless otherwise stated):

UK

London Central, London Hampstead			
Zone 2	B&B	£150	
	HB	£180	
Zone 3	B&B	£140	
	HB	£170	
Zones 4-6	B&B	£120	
	HB	£150	
Executive suppl.		£25	
Private bathroom suppl.		£75	
Brighton	B&B	£105	
	HB	£130	
Executive suppl.		£40	
Cambridge	B&B	£115	
	HB	£140	
Executive suppl.		£75	
UK summer suppl. Jun 27 - Aug 29		£15	

USA

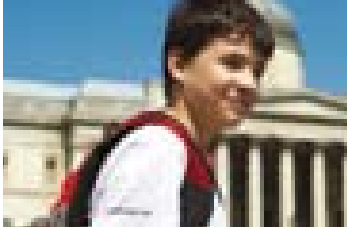
SF/Berkeley, San Diego & Boston	B&B	US\$185
Executive suppl.	HB	US\$250
New York (Manhattan)	B&B	US\$485
(outside Manhattan)	B&B	US\$260
Executive suppl. (in Manhattan)	HB	US\$325
USA summer suppl. Jun 27 - Aug 29		US\$180
		US\$30

Other Locations

Toronto & Vancouver	B&B	CD\$185
Executive suppl.	HB	CD\$215
Summer suppl. Jun 27 - Aug 29		CD\$60
Brisbane	B&B	AU\$160
Executive suppl.	HB	AU\$210
Auckland & Christchurch	B&B	NZ\$175
Executive suppl.	HB	NZ\$220
Paris	B&B	€205
	HB	€270
Frankfurt	B&B	€170
	HB	€240
Zürich	B&B	CHF250
	HB	CHF370
Sliema	HB	€24.50
(prices per night)	FB	€27.50
Summer suppl. Jul 1- Sep 30	HB	€4.50
	FB	€5.50

Hotel

2, 3 and 4 star hotel prices available on request.



English for Young Learners

Available in the USA, UK & Canada, our Young Learners' programmes are ideal for small groups or independent young people eager to develop their English language skills whilst benefiting from an exciting variety of cultural and social activities. Choose from our centres in San Diego, Toronto, Chichester, Brighton or London and enjoy the experience of a life time.



LSI London Young Learners' Programme (13-17 years)

This course is based in Hampstead Village – a quiet, upmarket, leafy suburb in the cosmopolitan city of London. The programme includes English tuition and an exciting social programme. You will get the chance to practise your English with other young people from around the globe. Stimulating lessons both in and outside the classroom will bring your English alive. It will be a summer experience you will always remember!

- 20 lessons per week (9am to 1pm)
- Elementary to Advanced levels
- Afternoon activities/Saturday excursions
- Optional: Full board accommodation in single/twin* room homestay OR residential accommodation for accompanied students only

Starting Dates
Every Monday from Jul 5 to Aug 16.
(Course ends Aug 20)

Prices including insurance

Registration fee: UKE60

Programme (lessons + activities) per week: UKE340

Programme plus full board homestay accommodation per week:

Single room UKE555
Twin room* UKE540

Programme plus residential accommodation (full board), per week:

Single room UKE685
Twin room* UKE655

One group leader can accompany each group of 15 students for free.

Airport transfers (one way):

Heathrow UKE70
Gatwick UKE90

* For students booking together with same arrival and departure dates

Sample week on the LSI London Young Learners' Programme

Sun

• Arrival day or free time

Mon - Fri

- Mon: Welcome and placement test
- Tues - Fri: Grammar, vocabulary skills, pronunciation
- Break Time
- Project Work & Skills Development
- Packed Lunch
- Afternoon activities: Hampstead Walk, The National Gallery, St Paul's Cathedral, Millennium Bridge & The South Bank, Shakespeare's Globe Theatre, Certificates & Leaving Party, Camden Market
- Dinner with Host Family

Sat

• Departure Day or Full Day Trip to Greenwich /River Thames Cruise



LSI Chichester Young Learners' Programme (12-17 years)

Spacious and green, the vibrant University of Chichester campus provides the beautiful backdrop for this residential course. Structured morning classes, designed to engage and stimulate, are followed by informal afternoon activities presenting students with further opportunities to practice their English language skills. The surrounding countryside, quirky seaside towns and beaches offer a fascinating array of excursions and activities for our social programme. This is a summer experience not to be missed!

- 20 lessons per week
- Elementary to Advanced levels
- Afternoon activities/Saturday excursions
- Full board residential dormitory accommodation

Starting Dates
Every Monday from Jul 5 to Aug 23.
(Course ends Aug 27)

Prices including insurance

Registration fee: UKE60

Programme (lessons + activities) plus full board residential accommodation per week:

single room, private bathroom UKE645
single room, shared bathroom UKE595

One group leader can accompany each group of 15 students for free.

Airport transfers (one way):

Heathrow UKE120
Gatwick UKE60

Sample week on the LSI Chichester Young Learners' Programme

Sun

• Arrival day or free time

Mon - Fri

- Mon: Welcome and placement test
- Tues - Fri: Grammar, vocabulary skills, pronunciation
- Break Time
- Project Work & Skills Development
- Packed Lunch
- Afternoon activities: Visit Arundel Castle, games and sports afternoon, West Wittering beach, art gallery visit, walk around historic town centre

Sat

• Departure Day or Day trip to Portsmouth



LSI Brighton Young Learners' Programme (13-17 years)

The cosmopolitan seaside town of Brighton provides the lively setting for this Young Learners' Course. Combining structured morning classes with stimulating afternoon activities, there will be ample opportunity to improve your English whilst making friends with an international array of fellow students. Organised weekend excursions are also included as part of this popular course.

- 20 lessons per week
- Elementary to Advanced levels
- Afternoon activities/excursions
- Optional: Full board accommodation in single/twin* room homestay

Starting Dates
Every Monday from Jul 5 to Aug 16.
(Course ends Aug 20)

Prices including insurance

Registration fee: UKE60

Programme (lessons + activities) per week: UKE340

Programme plus full board homestay accommodation per week:

Single room UKE555
Twin room* UKE540

One group leader can accompany each group of 15 students for free.

Airport transfers (one way):

Heathrow UKE120
Gatwick UKE60

* For students booking together with same arrival and departure dates

Sample week on the LSI Brighton Young Learners' Programme

Sun

• Arrival day or free time

Mon - Fri

- Mon: Welcome and placement test
- Tues - Fri: Grammar, vocabulary skills, pronunciation
- Break Time
- Project Work & Skills Development
- Packed Lunch
- Afternoon activities: visit Brighton Pier, the Brighton Aquarium, shopping trip to the Lanes, games and sports afternoon, visit to historic Brighton Pavilion
- Dinner with Host Family

Sat

• Departure Day or Full Day Trip to London



Thanks to LSI, my English improved so much because we were talking English all the time. All the teachers were kind and friendly.



Aska Itakura, Japan



LSI Toronto Young Learners' Programme (13-17 years)

Based at our fun, caring and friendly school in Toronto, the LSI Toronto Young Learners' Programme provides young students with the opportunity to practice their English with peers from around the world. Formal English classes take place every weekday morning followed by a wide range of afternoon excursions and activities.

- 20 lessons per week
- Elementary to Advanced levels
- Afternoon activities/excursions
- Optional: Full board accommodation in twin room homestay

Starting Dates (for individuals)

Every Monday* from Jul 5 to Aug 9. (Course ends Aug 13). Groups available all year round.

Prices

Registration fee: CD\$120

Programme (lessons + activities) per week: CD\$540

Programme plus twin room, homestay accommodation (full board), per week: CD\$830

For prices with residence accommodation please contact the school. One group leader can accompany each group of 15 students for free.

Upon request: Insurance, per week CD\$25

Airport transfer (one way) CD\$100

Custodianship service available if requested by Canadian Embassy CD\$150

*Where a public holiday falls on a Monday, the course will start on the Tuesday

Sample week on the LSI Toronto Young Learners' Programme

Sun

- Arrival day or free time

Mon - Fri

- Mon: Welcome and placement test
- Tues - Fri: Grammar, vocabulary skills, pronunciation
- Break Time
- Mon: Induction and first lesson. Tues - Fri: Project work
- Packed Lunch
- Afternoon activities: CN Tower, Games and sports afternoon, Casa Loma visit, Art Gallery visit
- Evening activities: Boat cruise, Film night, Festival at Harbourfront, Bluejays Baseball game, All ages dance party

Sat

- Trip to Niagara Falls



LSI San Diego Young Learners' Programme (13-17 years)

Based at our San Diego centre in sunny Southern California, the programme gives younger students the opportunity to study in an international environment with other young students from the world over. Morning English lessons followed by a variety of activities and excursions in the afternoon make up the core of the programme. Evening and weekend events round out the experience. Come for a summer of sand and fun in this beautiful beach city.

- 20 lessons per week
- Elementary to Advanced levels
- Afternoon activities/weekend excursions
- Optional: Full board homestay accommodation in shared room

Starting Dates

Every Monday* from Jun 28 to Aug 9 (Course ends Aug 13).

Prices

Registration fee: US\$120

Programme (lessons + activities) per week: US\$540

Programme plus shared room homestay accommodation (full board), per week: US\$830

One group leader can accompany each group of 15 students for free.

Upon request: Insurance, per week US\$25

Required: Airport transfer (one way) US\$85

*Where a public holiday falls on a Monday, the course will start on the Tuesday

Sample week on the LSI San Diego Young Learners' Programme

Sun

- Arrival day or free time

Mon - Fri

- Mon: Welcome and placement test
- Tues - Fri: Grammar, vocabulary skills, pronunciation
- Break Time
- Mon: Induction and first lesson. Tues - Fri: Project work
- Packed Lunch
- Afternoon activities: Downtown Tour, Balboa Park museums, Games and sports afternoon, Old Town State Park, Beach volleyball
- Evening activities: Harbour cruise, Padres Baseball game, Film night, All-ages club, Beach party

Sat

- Trip to Balboa Park

Family Programme



Designed for parents who wish to combine a family holiday with their English studies, the LSI Family Programme allows parents to choose from a wide selection of adult courses whilst their children follow specialised young learner courses. A unique opportunity to study together as a family, this course represents an unforgettable, shared experience.

Leisure activities and teaching methods are specially adapted to suit both adults and children ensuring that all the family will have fun whilst learning. This programme is offered at our schools in London Hampstead, Brighton, Chichester, Toronto and San Diego. Qualifying age for the Young Learner Course varies according to the centre; please check course details and dates.

In addition for our youngest students (5 -12 years) LSI Brighton offers our Junior Stringer Programme based on the Dorothy Stringer Campus (Mon-Fri, 9.00-16.00), just 30 minutes by bus from the school. The camp includes a fantastic range of activities, English lessons (15 hrs/wk) and a daily hot lunch. Supervised transport can be arranged to and from the camp for an additional cost. This programme is available from Jul 26 - Aug 20 2010. Contact LSI Brighton for accommodation options and availability.

Price per week per child: UK£275

Price per week including transport: UK£335



LSI

www.lsi.edu

OVER
40
YEARS
EXPERIENCE

Learn and live the language

Language Studies International

ENGLAND

LSI London Central

19-21, Ridgmount Street
London WC1E 7AH
Tel. +44 (0)207 467 6500
Fax. +44 (0)207 323 1736
E-mail: lon@LSI.edu

LSI London Hampstead

13, Lyndhurst Terrace
London NW3 5QA
Tel. +44 (0)207 794 8111
Fax. +44 (0)207 431 5681
E-mail: ham@LSI.edu

LSI Brighton

13, Ventnor Villas
Brighton BN3 3DD
Tel. +44 (0)1273 722 060
Fax. +44 (0)1273 746 341
E-mail: bri@LSI.edu

LSI Cambridge

41, Tenison Road
Cambridge CB1 2DG
Tel. +44 (0)1223 361 783
Fax. +44 (0)1223 467 725
E-mail: cam@LSI.edu

LSI Chichester

Tel. +44 (0)333 240 0579
Fax. +44 (0)207 443 9881
E-mail: chichester@LSI.edu

USA

LSI Berkeley

2015 Center Street
Berkeley CA 94704
Tel. +1 510 841 4695
Fax. +1 510 841 3015
E-mail: ber@LSI.edu

LSI San Diego

1706 5th Avenue
San Diego CA 92101
Tel. +1 619 234 2881
Fax. +1 619 234 2883
E-mail: san@LSI.edu

LSI Boston

105 Beach Street
Boston MA 02111
Tel. +1 617 542-3600
Fax. +1 617 542-1790
E-mail: bos@LSI.edu

LSI New York

**Metropolitan College
of New York**
431 Canal Street, 12th Floor
New York, NY 10013
Tel. +1 212 965-9940
Fax. +1 212 965-1268
E-mail: nyc@LSI.edu

CANADA

LSI Vancouver

Suite 101, 808 Nelson Street
Vancouver, B.C. V6Z 2H2
Tel. +1 604 683 7654
Fax. +1 604 683 7554
E-mail: van@LSI.edu

LSI Toronto

Suite 210, 1055 Yonge Street
Toronto, ON M4W 2L2
Tel. +1 416 928 6888
Fax. +1 416 928 3388
E-mail: tor@LSI.edu

NEW ZEALAND

LSI Auckland

Level 1, 10-12, Scotia Place
Auckland City
Tel. +64 (0)9 303 3097
Fax. +64 (0)9 303 3497
E-mail: auc@LSI.edu

LSI Christchurch

Floor 2,
114, Peterborough Street
Christchurch
Tel. +64 (0) 3 377 7337
Fax. +64 (0) 3 377 7338
E-mail: chc@LSI.edu

AUSTRALIA

LSI Brisbane

93, Edward Street
Brisbane QLD 4001
Tel. +61 (0)7 3221 6977
Fax. +61 (0)7 3221 6861
E-mail: bne@LSI.edu

MALTA

English Language Academy

9 Tower Lane
Sliema SLM 1611
Tel. +356 2134 6264
Fax. +356 2133 9656
E-mail: info@elamalta.com

FRANCE

LSI Paris

350, Rue St Honoré
75001 Paris
Tel. +33 (0)1 4260 5370
Fax. +33 (0)1 4261 4136
E-mail: par@LSI.edu

GERMANY

LSI Frankfurt

Zeil 107
60313 Frankfurt
Tel. +49 (0)69 20309
Fax. +49 (0)69 296 339
E-mail: fra@LSI.edu

SWITZERLAND

LSI Zürich

Kreuzstrasse 36
8008 Zürich
Tel. +41 (0)44 251 5889
Fax. +41 (0)44 251 5805
E-mail: zur@LSI.edu

BELGIUM

Language Studies International

Rue du Taciturne, 50
1000 Bruxelles
Tel. +32 (0)2 217 2373
Fax. +32 (0)2 217 6451
E-mail: info@lsi-be.net

www.lsi.edu



Language Studies
International
© Copyright 2009/10 Language
Studies International Ltd.



Preparation courses for
University of Cambridge ESOL Examinations



LSI programs are accredited by the
New Zealand Quality Standard
Education & Training published by
the U.S. Department of Education

