

Experience
the difference



Regent Language Training



www.regent.org.uk

English in England

for Young Learners

2010

14-17 years
and 8-14 years

Welcome to Regent

- Over 40 years' experience of helping juniors to speak English
- Highly motivating, enjoyable, and effective language learning
- Great summer schools in some of the finest locations in England
- Small class sizes of 12
- Lively, dynamic and action packed programmes
- The highest levels of care and supervision

Learning in a positive, supportive, inclusive atmosphere

Welcome to the Regent experience - the highest quality English language training for children and young adults in a positive, inclusive and supportive atmosphere. Our friendly, professional teachers, very effective methods and a dynamic and exciting learning environment all ensure that our junior students improve their English quickly.

We offer a variety of great summer schools in the UK. Wherever juniors learn you can expect a high quality programme based on our years of experience, the strength of our reputation and our attention to detail.

Every year we have around 100 different nationalities join Regent. Our programmes are truly multinational, so there are lots of opportunities to practise English and mix with people and cultures from around the world. Join us for an educational holiday of a lifetime!





Parents' Checklist

We take care of your children,
we take care of you.

Care and Supervision

- I want my child to be met at the airport ✓
- I want my child to be looked after 24 hours a day ✓
- I want my child to be supervised outside school ✓
- I want my child's pocket money to be held safely ✓

Happiness

- I want my child to be made to feel welcome ✓
- I want my child to enjoy the experience ✓
- I want my child to make friends ✓
- I want to be able to contact my child ✓

Food

- I want my child to have a healthy, nutritious diet ✓
- I want my child to enjoy their meals ✓

Learning

- I want my child to be confident in English ✓
- I want my child to try new activities ✓

Excursions

- I want my child to go on exciting trips each week ✓
- I want my child to visit interesting places ✓

Contents

Our complete programme	4
Accommodation and travel	6



Box Hill,
Dorking 7
Age 8-14



Wycliffe,
Stonehouse 8
Age 14-17



Eton College,
Windsor 9
Age 14-17



Queen Ethelburga's, 10
York 10
Age 14-17



Scanbrit School,
Bournemouth 11
Family Stay
Age 14-17



Home Tuition 12
Age 11-16

Our complete programme

Every day is action packed. From morning to evening students are busy, learning and enjoying themselves.

15 hours per week English Club Programme <ul style="list-style-type: none">• Lessons on 5 mornings a week• One half-day excursion per week• One full-day excursion per week• Full afternoon programme of sports, cultural and recreational activities	07.30 Wake up	08.00 Breakfast in school or with homestay family	08.45 School assembly: talk from the Centre Manager, leisure activity briefing from Social Programme Co-Ordinator
	13.45-15.15 Afternoon activities: such as tennis, treasure hunt, cricket or cultural excursion on Wednesday afternoons	15.15-15.45 Break with drinks	15.45-17.15 Late afternoon activities: such as swimming, football, tennis, arts & crafts or half-day excursion on Wednesday afternoons

This is a typical timetable and may be subject to change.

Positive, supportive and inclusive

Since 1965 we have been providing consistently high quality English courses, and promoting English language learning in a memorable, motivating, and structured environment. We are passionate about our students' learning experience and work hard to ensure that everyone has a positive time with us.

From the moment our Young Learners arrive, Regent staff are on-hand to guarantee that they are active, learning effectively and having the educational experience of a lifetime. We offer a variety of first-rate schools in some of the finest locations in England where students are comfortable, cared for and encouraged to speak English.

Supported learning

Students are taught in small (maximum 12) multi-national groups. We focus on improving communication skills, activating existing knowledge and building confidence. Throughout the course, students create a Personal Portfolio and Diary to record their learning and achievements. Students can expect to make good progress every week - the longer the course, the more their English improves.

**09.30–11.00**

Lessons:
grammar and
reading/listening
comprehension

11.00–11.30

Break

11.30–13.00

Lessons:
vocabulary building
and speaking skills

13.00–13.45

Lunch at school with
all your new friends

17.15–18.00

Homework
or return to
homestay

18.00–19.00

Dinner

19.00–19.30

Free time to relax
with friends or
homestay family

19.30–22.00

In residence: evening
programme including
talent show, disco,
casino, fashion night,
blind date.
In homestay: spend
evening with the family

Lessons finish, the learning continues

Juniors learn a lot with us. Learning doesn't just happen in our lessons. Throughout the whole course we encourage students to develop and practise their English skills – in the school common rooms, in the dining room, in the residential houses, on the activities and excursions. This helps students to activate their knowledge of English and builds their confidence in using the language

At the beginning of their stay all students are put into multi-national teams. This integrates all the nationalities encouraging friendships and the speaking of English. Students do sports and social activities with their teams. Points can be won by the teams or by individual students and the winners receive prizes (such as tee shirts) or privileges (such as a pizza or film night).

A full day of entertainment

Every course includes an exciting leisure programme which includes daily activities, sports and games. Activities and events are divided into afternoon and evening programmes so that each day is well structured and offers students a stimulating and enjoyable environment. In addition, every week includes one full-day and one half-day excursion or visit to places of interest.

Every morning before lessons, there is an assembly to inform the students about what activities are happening during the day. Also, information is given about weekend excursions and competitions.

Our schools, our accommodation and travel services

Our schools

On campus

Our residential schools are selected for their excellent facilities and secure environments. Students have a single room or share with juniors of different nationalities. Girls and boys are accommodated separately. All meals are taken at the school, except on excursion days when packed lunches are provided. The schools operate a banking service for pocket money and lockable storage facilities for valuables.

Staff are residential and live on site with the students to ensure 24 hour supervision and care.

In homestay

In Bournemouth the homestays are located within walking distance of the school. Living with an English family provides an ideal opportunity to practise English outside the class. Full meals are provided by the family including a packed lunch on school days and excursion days.

What's included

English Club Programme: 15 hours (= 20 lessons of 45 minutes) of tuition per week, full-board homestay or residential accommodation, all supervised leisure activities, full day Saturday excursion and one half day excursion per week, supervision by Regent staff, loan of course books, identity card, Certificate of Achievement, personal laundry, transfers on specified times, dates and airports. Not included in the fees are transfers other than those specified, £50 key/damage deposit (collected on arrival in residential schools and refundable provided no loss or damage has occurred).

Arrivals and departures

We provide a free meeting and transfer service to and from major airports (London Heathrow, London Gatwick, Manchester) on our start and finish dates between 11.00 and 19.00 on arrival day and between 13.00 and 19.00 on departure day. For arrivals and departures at other times and dates we can arrange a special transfer at additional cost of £165 one way.

On our start and finish dates we provide a Welcome Club for arrivals at Heathrow and Gatwick airports. Here students can begin their Regent summer experience in comfort and safety in a supervised environment. On arrival at the Welcome Club, students are given information about the time of their onward transfer to their Regent school. Students are free to relax and enjoy the activities and entertainment provided including outdoor sports such as football, basketball and volleyball and indoor activities such as table tennis, softball, and a cinema showing English films. The club is supervised by adult staff at all times and food and drink is served throughout the day.



Box Hill, Dorking



- Ideal for younger students
- Within easy reach of London
- Beautiful country village location

Set in the splendid North Downs countryside, the school is only 45 minutes from central London. The campus is on an extremely safe and secure site, and is ideal for younger students. There are excellent study and recreation facilities, including an outdoor heated pool and sports fields. At Box Hill, beginners are accepted.

Activity and excursion programme

There are full-day excursions to the cathedral city of Guildford and the seaside town of Brighton. We visit London for sightseeing and the famous museums in the capital. Excursions also include trips to the historic Hever Castle and the adventure park Chessington World of Adventures.

Students experience activities such as ten-pin bowling, lazer-quest, discos, talent nights, circus skills, treasure/scavenger hunts, shopping, fashion shows, drama and much, much more.

All activities and excursions listed are examples and may be subject to change.



Capacity	120 students
Age Range	8-14
Class Size (maximum)	12
English Club Course	15 hours per week
Level	From Beginner to Advanced
Facilities	Internet café, sports hall, tennis courts, playing fields and outdoor swimming pool.
Location	Dorking London 25km
Accommodation	Campus: bedrooms sleeping 2-5



2010 courses and fees

Length of course	Dates	Fees
2 week course	27/06-10/07	£1600
	04/07-17/07	£1600
	18/07-31/07	£1600
	01/08-14/08	£1600
3 week course	27/06-17/07	£2400
	04/07 24/07	£2400
	25/07-14/08	£2400
4 week course	04/07-31/07	£3200
5 week course	27/06-31/07	£4000
7 week course	27/06-14/08	£5600

Wycliffe, Stonehouse

- Excellent sporting and educational facilities
- Set in beautiful English countryside
- Close to Shakespeare's Stratford-Upon-Avon

Located in the Cotswolds between Oxford and Bristol and just two hours from Heathrow, Wycliffe is set in 54 acres of beautiful, private grounds. The outstanding sports facilities include a double sports hall, tennis and squash courts, and rugby and football pitches.

Activity and excursion programme

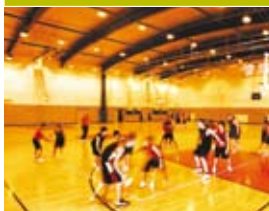
There are visits to nearby Berkeley Castle and the bustling cities of Bristol, Bath, Cardiff and London. Students also have an action packed day at Drayton Manor Theme Park. In addition there is a visit to Oxford, which includes punting past the Botanic Gardens and Christ Church College, and a tour of the city's landmarks.

Students experience activities such as ice-skating, ten-pin bowling, discos, talent nights, circus skills, treasure/scavenger hunts, shopping, fashion shows, drama and much, much more.

All activities and excursions listed are examples and may be subject to change.



Capacity	120 students
Age Range	14-17
Class Size (maximum)	12
English Club Course	15 hours per week
Level	From Beginner to Advanced
Facilities	Indoor sports hall, playing fields, tennis and volleyball courts, large theatre, Wi-Fi internet and common rooms with pool tables.
Location	Stonehouse Stroud 5km, Bristol 46km London 177km
Accommodation	Campus: bedrooms sleeping 1-4. Twin en-suite available



2010 courses and fees

Length of course	Dates	Fees
2 week course	11/07-24/07	£1600
	25/07-07/08	£1600
3 week course	11/07-31/07	£2400
4 week course	11/07-07/08	£3200

Twin ensuite accommodation at Wycliffe is available at a supplement of £50 per week.

Eton College, Windsor

The world's most famous school!

- Prestigious school close to London
- Set in impressive grounds
- Excellent sports and accommodation facilities

Regent students have the truly unique experience of studying in the world's most famous school! Eton College, located in Eton on the banks of the River Thames, has played a part in the history of Britain for over 560 years. The school campus is a piece of British history updated for the 21st century with contemporary accommodation and an excellent variety of modern sports facilities.

Activity and excursion programme

Regent students staying at Eton College visit famous English landmarks such as Windsor Castle, Big Ben, Houses of Parliament and Madame Tussauds. There is a trip to the seaside town of Brighton, and students also spend an exciting and fun-filled day at adventure park Thorpe Park.

In addition students also experience activities such as bowling, discos, talent nights, circus skills workshops, shopping, fashion shows, drama, music, various sports and much, much more.

All activities and excursions listed are examples and may be subject to change.



Capacity	120 students
Age Range	14-17
Class Size (maximum)	12
English Club Course	15 hours per week
Level	From Lower-intermediate to Advanced
Facilities	Indoor sports hall, indoor swimming pool, playing fields, squash courts and common room.
Location	Windsor, Berkshire
Accommodation	Campus: single bedrooms



2010 courses and fees

Length of course	Dates	Fees
2 week course	11/07-24/07	£1980
	25/07-07/08	£1980
4 week course	11/07-07/08	£3960

Queen Ethelburga's, York

- Ideal for access to the North of England's many attractions
- Impressive sports facilities
- Set in attractive grounds

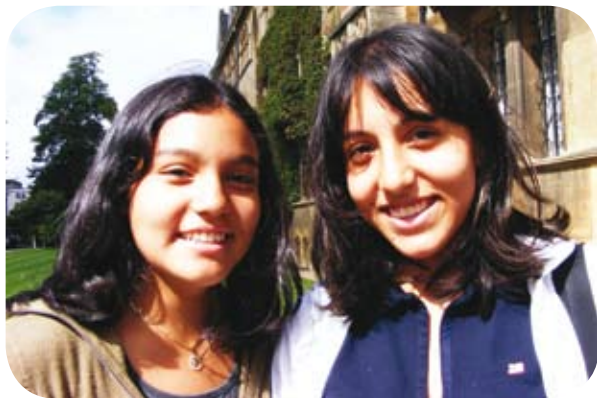
Originally founded in 1912, Queen Ethelburga's is a traditional English boarding school boasting contemporary interiors, modern facilities and extremely comfortable accommodation. It is situated in 100 acres of rural countryside and offers excellent academic and recreational facilities for young people. Sports facilities include a sports hall, football pitches, tennis courts, a professional cricket square and a swimming pool.

Activity and excursion programme

There are day trips to York to explore this historic and beautiful city and the famous York Minster Cathedral. There are day trips to Manchester and Liverpool for entertainment, shopping and museums. In addition there are cultural visits to local places of interest such as Castle Howard with its impressive grounds and adventure playground.

Students experience activities such as ten-pin bowling, discos, talent nights, circus skills, treasure/scavenger hunts, shopping, fashion shows, drama and much, much more.

All activities and excursions listed are examples and may be subject to change.



Capacity	80 students
Age Range	14-17
Class Size (maximum)	12
English Club Course	15 hours per week
Level	From Beginner to Advanced
Facilities	Indoor sports hall, indoor tennis court, playing fields, cricket square and swimming pool.
Location	15km from York
Accommodation	Campus: all apartments sleep 2-4 and offer en-suite bathroom facilities



2010 courses and fees

Length of course	Dates	Fees
2 week course	04/07-17/07	£1600
	18/07-31/07	£1600
	01/08-14/08	£1600
3 week course	04/07-24/07	£2400
	25/07-14/08	£2400
4 week course	04/07-31/07	£3200
6 week course	04/07-14/08	£4800

Scanbrit School, Bournemouth

Family stay

- Warm, friendly and welcoming atmosphere
- Location very close to the beach
- Homestay accommodation within walking distance

Homestay programme for teenagers in a quiet and safe residential area of Bournemouth. Programmes include full-board accommodation, fully-supervised activity programme and the opportunity of living with a local family.

The school in Bournemouth has excellent facilities including a student lounge with wide screen TV, an internet café, a garden and a canteen.

Activity and excursion programme

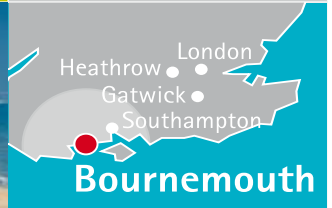
Nearby are great places to visit including the New Forest and the famous Jurassic Coast. There are full-day excursions to London for sightseeing and the famous museums in the capital. In addition, there are excursions to historic cities such as Oxford and Bath.

Students experience activities such as sport tournaments and beach barbecues.

All activities and excursions listed are examples and may be subject to change.



Capacity	80 students
Age Range	14-17
Class Size (maximum)	12
English Club Course	15 hours per week
Level	From Beginner to Advanced
Facilities	2 minutes from the beach, Wifi connection, student lounge with TV, garden
Location	95 minutes from London by train
Accommodation	Homestay: single room in homestay family



2010 courses and fees

Length of course	Dates	Fees
2 week course	04/07-17/07	£1280
	11/07-24/07	£1280
	18/07-31/07	£1280
	25/07-07/08	£1280
	01/08-14/08	£1280

Home Tuition



- Live and learn in the home of your teacher
- Study one-to-one for the fastest possible progress
- Total immersion – learning from morning to night

Regent Home Tuition is a unique programme combining excellent language training, accommodation and a personal friendly service. As you live with your teacher and practise English all the time, your English develops naturally and quickly.

The course includes 24 hour supervision by the teacher or the teacher's family and visits to local places of interest at least twice a week.

This programme offers a wide choice of excellent locations throughout the United Kingdom.

Age range	11-16 years
Class Size (maximum)	1
No lessons on:	1 Jan; 25 Dec; 26 Dec
Meals	Breakfast, lunch and dinner included
Activities	Activities with your teacher at extra cost
Location	All within 1 hour travelling time of our schools in Bournemouth, Brighton, Cambridge, Edinburgh, London or Oxford
Accommodation	In the teacher's home
What's included	All lessons, accommodation, meals and at least two activities each week



2010 course fees per week

Length of course	One-to-one hours per week		
	15 hours	20 hours	25 hours
1 week	£1215	£1525	£1835
2-3 weeks	£1135	£1445	£1755
4 weeks	£1115	£1425	£1735

- Course dates: start every Monday of the year.
- Arrival day is Sunday, departure day is Saturday.

Transfers (one way)	London Heathrow	London Gatwick	Edinburgh	Stansted
Bournemouth	£125	£140	–	£185
Brighton	£135	£65	–	–
Cambridge	£135	£145	–	£65
Edinburgh	–	–	£50	–
London	£90	£100	–	£105
Oxford	£120	£165	–	£195

Enrolment Form (please complete both sides)

Experience
the difference



1. Personal Details

Family Name _____ First Name _____

Nationality _____ First Language _____ Second Language _____

Male Female Age _____ Date of Birth _____

Name in Passport _____ Passport Number _____

Home Address _____

Email _____ Telephone _____ Fax _____

Address for invoice (if different) _____

Emergency Contact Details During Course: Name _____ Telephone _____

How did you hear about Regent? _____

2. Course, location and dates

English Club Programme: Box Hill Queen Ethelburga's Eton College Wycliffe Scanbrit

Home Tuition Hours per week _____ Location _____

Course Start date _____ Course Finish date _____ No. of weeks _____

What is your level of English?

Beginner Elementary Lower-intermediate Intermediate Upper-intermediate Advanced Very Advanced

Full board accommodation is included in the fees - tick below for an ensuite room at extra cost

Wycliffe Twin ensuite (£50 per week)

Have you studied with Regent before? No Yes Where? _____ When? _____

3. Medical and Travel Insurance

You must have Medical and Travel Insurance if you book a course with us. Please send us proof that you have adequate alternative cover:

I have arranged my own insurance and have attached proof of alternative cover.

4. Calculating your fees

I would like to pay the full fees now. I would like to pay the deposit of £300 now and the full fees 30 days before the course starts.

Course fee (includes accommodation) _____

Ensuite accommodation supplement _____

Special transfer fee or Home Tuition transfer fee _____

Documents sent by courier fee (£45) _____

Total cost _____

5. Payment Method

Cheque (£ Sterling only) drawn on a British Bank made payable to Regent Language Training. Please write the student's name on the back of the cheque.

Credit card Visa Mastercard Debit Card Bank Transfer Regent's Representative

I hereby authorise Regent to charge the deposit of £300 to my card

I hereby authorise Regent to charge the balance of £_____ to my card 30 days before the course starts

I hereby authorise Regent to charge the full amount of £_____ to my card now

Card number Security code (last 3 digits on reverse of card)

Valid from Expiry date Name of cardholder _____

Address of cardholder _____

Signature of cardholder _____

6. Your Agreement and Signature

I agree to the use of my child's personal information, including health and religious or dietary requirements, set out in the terms and conditions. Yes No

I agree that you can send me occasional information about Regent Young Learners courses and services. Yes No

I have received and understood the Terms and Conditions. I certify that all the information given by me in this enrolment form is accurate and complete. A parent or guardian must sign this form. In doing so the parent or guardian agrees to the Terms and Conditions.

Signature of parent or guardian _____

Date _____

7. Regent Representative

Junior Medical and Travel Form

1. Personal Details

Family Name _____

Age _____ Date of Birth (dd/mm/yy) _____

First Name _____

Male Female Regent school _____

2. Medical Details

Do you suffer from any disability or illness? Yes No _____
Have you recently had an operation? Yes No _____
Are you taking any medicine? Yes No _____
Are you allergic to anything? Yes No _____
Do you have any special dietary needs? Yes No _____

If 'Yes' to any question, please give details

3. Authorisation

Daytime Yes No No child under the age of 16 is allowed out unsupervised. Students who are 16 years old and above have the opportunity to go shopping in small unsupervised groups (minimum 3 students per group). This is also possible for up to 2 hours on trips and visits. Students will be required to sign out and back in again when they go out in unsupervised groups. I agree to the above.

Evening – No student is allowed out unsupervised in the evening.

4. Transfer Details

Please complete A, B or C below:

Please complete A, B or C below:

Arrival dates for free transfer

Box Hill 27/6, 04/7, 18/7, 25/7, 01/8
Wycliffe 11/7, 25/7
Eton College 11/7, 25/7
Queen Ethelburga's 04/7, 18/7, 25/7, 01/8
Scanbrit 04/7, 11/7, 18/7, 25/7, 01/8

Departure dates for free transfer

Box Hill 10/7, 17/7, 24/7, 31/7, 14/8
Wycliffe 24/7, 31/7, 07/8
Eton College 24/7, 07/8
Queen Ethelburga's 17/7, 24/7, 31/7, 14/8
Scanbrit 17/7, 24/7, 31/7, 07/8, 14/8

A. Free arrival transfer

(Flight arriving between 11.00–19.00 on arrival day as specified above). Met at airport and driven to course centre.

London Heathrow London Gatwick
 Manchester (Queen Ethelburga's only)
Terminal no. _____
Date of arrival _____ Arrival time _____
Flight no. _____ From _____
Special requirements _____

A. Free departure transfer

(Flight departing between 13.00–19.00 on departure day as specified above). Met at course centre and driven to airport.

London Heathrow London Gatwick
 Manchester (Queen Ethelburga's only)
Terminal no. _____
Date of departure _____ Departure time _____
Flight no. _____ To _____
Special requirements _____

B. Special arrival transfer

(Available at extra cost for arrivals on dates and times NOT listed above). Met at airport and driven to course centre.

London Heathrow London Gatwick
 Manchester (Queen Ethelburga's only)
Terminal no. _____
Date of arrival _____ Arrival time _____
Flight no. _____ From _____
Special requirements _____

B. Special departure transfer

(Available at extra cost for departure on dates and times NOT listed above). Met at course centre and driven to airport.

London Heathrow London Gatwick
 Manchester (Queen Ethelburga's only)
Terminal no. _____
Date of departure _____ Departure time _____
Flight no. _____ To _____
Special requirements _____

C. Independent arrival

(Not arranged by Regent)
Date of arrival _____ Arrival time _____

C. Independent departure

(Not arranged by Regent)
Date of departure _____ Departure time _____

We cannot guarantee to meet you at the airport unless this form arrives at least 14 days before your course starts.

5. Signature of Parent or Guardian

Name _____ Signature _____ Date _____

Please mail or fax the completed form to the following address: Regent Young Learners, OISE House, 38 Binsey Lane, Oxford, OX2 0EY, UK
Tel: +44 (0) 1865 258316 Fax: +44 (0)1865 244696 Email info@regent.org.uk (or to our local representative).

How to book a course

To secure a place on a Regent course, please return the Registration Form together with payment of non-refundable deposit or book online at www.regent.org.uk.

Payment of fees

On receipt of the application and deposit a letter of confirmation is sent with a Statement of Fees which should be settled at least 4 weeks before the course starting date. In the case of registration less than 6 weeks before the course starting date, the full amount of the cost of the course must be sent with the Registration Form. PLEASE NOTE: students will not be allowed to start their course unless FULL PAYMENT has been received by the School. All bank charges must be paid for by the student.

Conditions for cancelling or changing a course by the Student

- If the School receives the cancellation before the course starting date, the School will retain the deposit.
- After the course has started, a student must give 10 days' written notice to the Principal of changes to or cancellation of a course. A cancellation fee equivalent to 1 week's course fees will be charged. Refunds cannot be made for non-attendance, absence due to illness or any other cause.
- Any refund due when a course is changed or cancelled, or a holiday taken, will be paid to the person who paid for the student's course at his/her home address at the end of the course. 'End of the course' here is defined as the last date of the course specified on the booking form (i.e. if a student books a 12 week course and decides to leave after 4 weeks s/he will not be refunded until 12 weeks after the start of the course).
- If a student is denied a student visa or study permit and provides the School with a copy of the rejection letter on or before the first day of classes, the School will refund the course fees.

Change or Cancellation of a course by the School

Sometimes it is agreed between the School and a student that it would be beneficial for the student to be moved to another School course. When this happens only a course of at least equivalent cost will be offered by the School.

The School reserves the right to cancel a course, or make changes to course arrangements, without liability, if forced to do so for reasons beyond its control. If this happened, the School would seek to offer alternative arrangements, dates or venues.

If the School cancelled a course booked and paid for by a student in accordance with these terms other than for reasons beyond its control, and did not offer an alternative acceptable to the student, the School would pay compensation as follows:

- Where the cancellation is before the start of the course, compensation equal to the deposit paid by the student or
- Where the cancellation is after the start of the course, compensation equal to one week's fees.

Liability and Insurance

Students should make sure that they organise their own travel insurance to cover medical costs and repatriation costs in the case of an illness or accident.

The School acts only as an intermediary between its students and travel organisations. Unless and to the extent caused by the School's negligence, the School cannot be held responsible for any delay or accident during a journey nor for any incident which may happen during the student's stay. The School will, however, endeavour to defend the student's interests in the event of breach of contract on the part of the travel organisation.

The School reserves the right not to allow on the course a student suffering from any illness, medical condition, or mental or physical disability which has not been disclosed on the Registration Form.

This brochure, issued by the School, gives the only terms and information that can be referred to in the event of a disagreement between the student and the School. These terms and conditions are governed by English law and do not affect your statutory rights under English law.

Personal Information and Photographs

We use the personal information that you give us, including information about your health and religious or dietary requirements, to perform our contract with you. We may also use it to ensure that we comply with UK law, for internal training, or to send you further information about our courses and services. We do not share your details with third parties other than as necessary to perform our contract with you. The information you give us is kept securely on our computer system, and is accessible by the schools and offices in the group of companies to which the School belongs, including those outside the European Union. If you do not want to receive further information from us, please write to us at the address below. Please contact us if you want to see a copy of the information we hold, or have questions about our use of your information.

The School reserves the right to use photographs taken during courses to illustrate its promotional material. If a student wishes that his or her photo should not appear in this material, they should write to the School within one month of the photo-shoot. These photos have no commercial or contractual value.

Further conditions specific to Young Learners (8–17 years)

The School reserves the right to issue disruptive students with a warning letter and, if there is no improvement in behaviour, to send them home at their parents' expense.

The School further reserves the right to send home without a warning letter any student committing a serious offence, especially one involving the police, and to include the following: theft, smoking in any School building, the possession of, purchase of or consumption of alcohol or illegal drugs.

On all outings, students are escorted by our Activity Leaders. We do not allow any of our Young Learners, whether staying in residence or in homestay, to go out in the afternoons or evenings, except when they join the group for organised, supervised activities, or in the event that parental consent is received.

Children on residential courses have evening activities and are not allowed to stay out unsupervised. Please note that the School cannot be held responsible for any incident whilst the student is out unsupervised.

Students aged 18 and over must register for an adult school. The School reserves the right to transfer an 18 year old from a Young Learners' Course.

Information about the School

In these terms "the School" means The Regent School where you book your course.

In the UK, Regent courses are operated by Regent Language Training Ltd, a company registered in England and Wales under company number 01175684 and with registered office at 38 Binsey Lane, Oxford, OX2 0EY United Kingdom.

Tel: +44 (0)1865 258300

Fax: +44 (0)1865 244696

Bank details

Account Name:	Regent Young Learners Sales
Account No:	40615717
Sort Code No:	40-52-62
Bank Address:	Fortis Bank, 5 Aldermanbury Square, London, EC2V 7HR
Swift (BIC) Code:	GEBAGB22
IBAN No:	GB30 GEB4 4052 6240 6157 17

All information correct at time of printing

Regent Young Learners
38 Binsey Lane
Oxford OX2 0EY
Tel: +44 (0) 1865 258300
Fax: +44 (0) 1865 244696
Email: info@regent.org.uk

Regent Home Tuition
18 Cromwell Road
Hove BN3 3EW
Tel: +44 (0) 1273 715 841
Fax: +44 (0) 1273 715 848
Email: hometuition@regent.org.uk

www.regent.org.uk



Courses for adults

In our schools in Bournemouth, Brighton, Cambridge, Edinburgh, London and Oxford we offer a range of courses for adults.

Contact

info@regent.org.uk or call +44 (0) 1865 258 300 for more information.